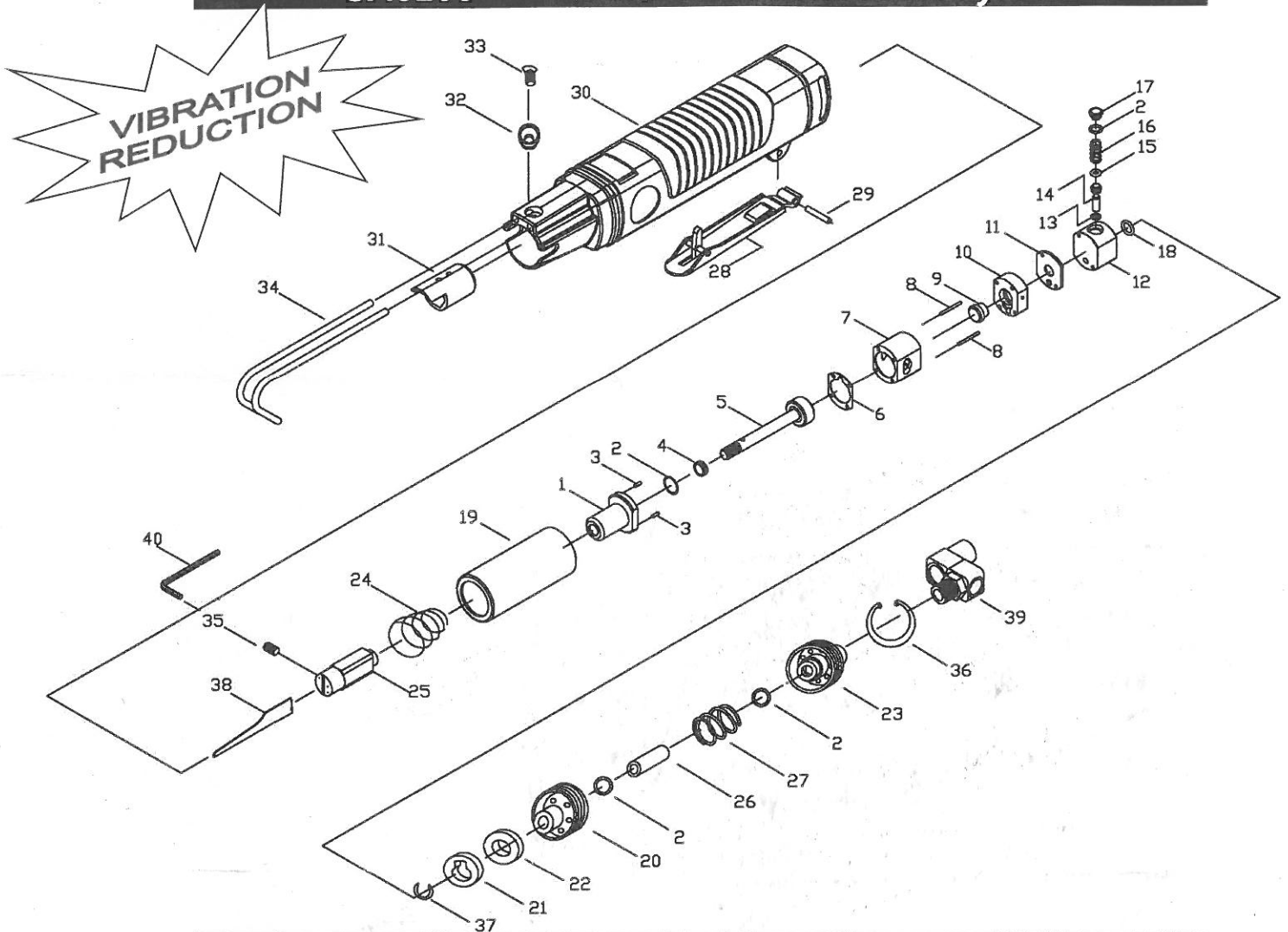


SA8200

Anti-Vibration Air Body Saw



SA8200

Anti-Vibration Air Body Saw

TECHNICAL DATA

Cutting Capacity-Thickness(Gauge)	: Steel 2.91 mm (9)
	: Alum. 3.26 mm(8)
Operating Air Pressure (Maximum)	: 6.3 Kg/Cm ² (90PSI)
Strokes Per Minute @90psi	: 9,500
Stroke Length	: 10 mm (13/32")
Avg. Air Consumption	: 6 CFM
Air Inlet (NPTF)	: 1/4"
Min. Hose Size	: 3/8" I.D.
Net Weight	: 0.7 kg
Overall Length	: 238 mm
Sound Pressure	: < 85 dBA
Vibration	: < 9 m/s ²
Standard Accessories Include	: 1 pc of 3mmHex Wrench
	: 1 each of 18T,24T &32T Saw Blade

PARTS LIST

Index	Part #	Description	Index	Part#	Description	Index	Part#	Description
1.	314403	Cylinder Head Ass'y	15.	OR0307	O-Ring	29.	SP3018	Spring Pin
2.	OR0812	O-Ring (4)	16.	318603	Spring	30.	311111B	Body
3.	RP2006	Front Dowel Pin (2)	17.	314606	Valve Cap	31.	314102	Sliding Linder
4.	314418	Bumper	18.	318203	Rubber Washer	32.	315104	Spacer
5.	314422	Piston Ass'y	19.	318101	Main Liner	33.	040706M	Screw
6.	314405	Gasket	20.	318211	Adaptor	34.	311704	Holder
7.	314401	Cylinder	21.	318704	Muffler Cap	35.	061006	Set Screw
8.	RP2020	Rear Dowel Pin (2)	22.	301709	Muffler	36.	CH3538	Retaining Ring
9.	314302	Automatic Valve	23.	315702	Air Inlet	37.	EC1317	Retaining Ring
10.	314311	Valve Chest	24.	318607	Shock Absorbent Spring	38.	314918Z-1	18T Saw Blade
11.	314303	Valve Seat	25.	316407M	Blade Holder Ass'y		314924Z-1	24T Saw Blade
12.	314222	Valve Case	26.	315202	Connecting Hose		314932Z-1	32T Saw Blade
13.	OR0507	O-Ring	27.	315608	Spring	39.	922A19	1/4"PT Universal Swivel
14.	314612	Valve Stem	28.	315601	Safety Lever Ass'y	40.	314933	Air Inlet Joint (opt.) 3mm Hex Wrench