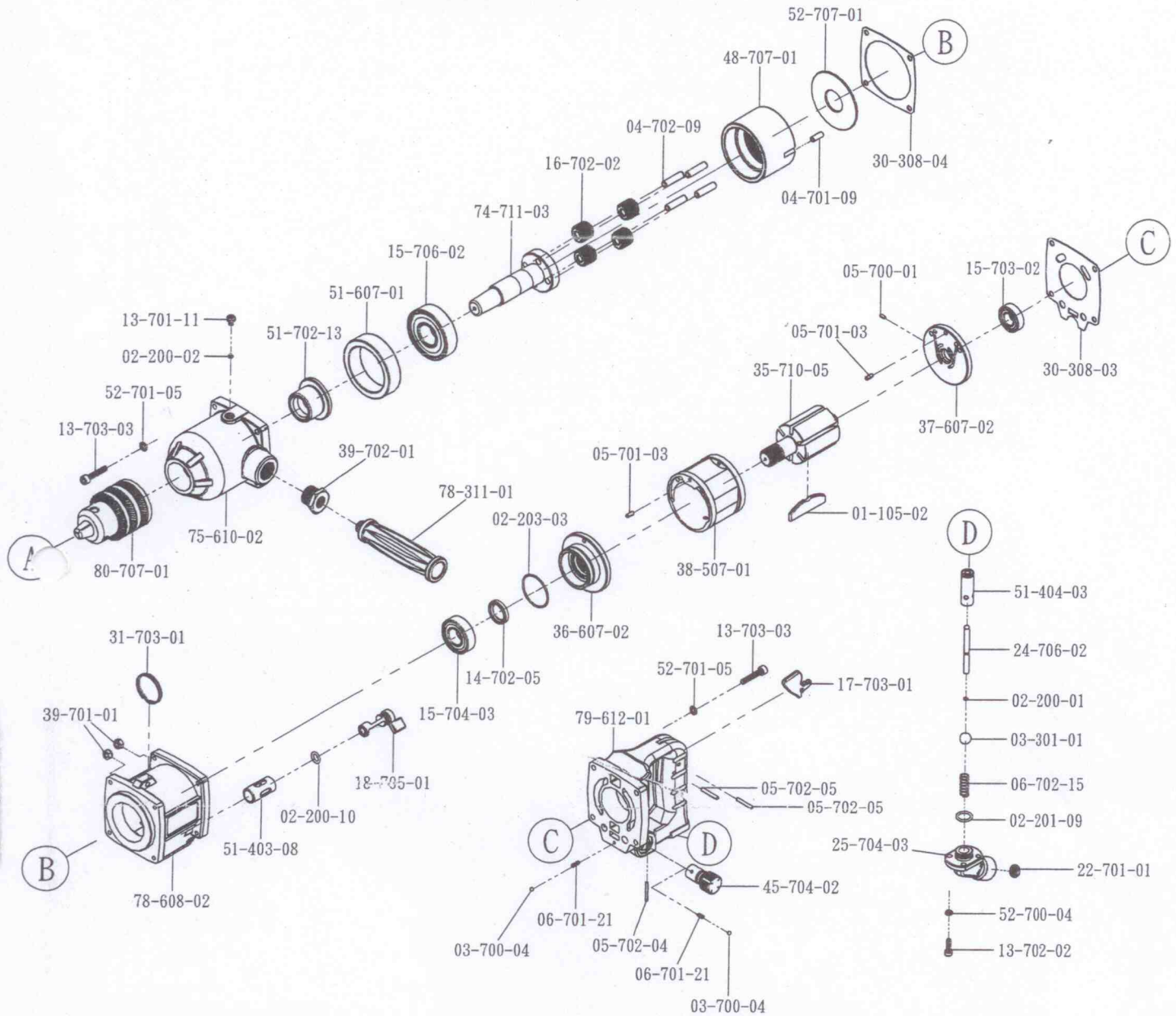


SA6123 5/8" Air Drill



Part No.	Description	Q'ty	Part No.	Description	Q'ty	Part No.	Description	Q'ty
01-105-02	ROTOR BLADE	6	13-703-03	SCREW	8	39-701-01	BOLT	8
02-200-01	O-RING (P2x1.5)	1	14-702-05	OIL SEAL	1	39-702-01	BOLT	1
02-200-02	O-RING (P3.5x1.5)	1	15-703-02	BALL BEARING (6002-2Z)	1	45-704-02	SPEED SWITCH	1
02-200-10	O-RING (P9.2x2.5)	1	15-704-03	BALL BEARING (6004-2Z)	1	48-707-01	GEAR RING	1
02-201-09	O-RING (P14x2.4)	1	15-706-02	BALL BEARING (6305-2Z)	1	51-403-08	BUSHING	1
02-203-03	O-RING (P37.82x1.78)	1	16-702-02	GEAR	4	51-404-03	BUSHING	1
03-301-01	PLASTIC BALL (φ 12.7)	1	17-703-01	SWITCH LEVER	1	51-607-01	BUSHING	1
03-700-04	STEEL BALL (φ 4mm)	2	18-705-01	REVERSE VALVE	1	51-702-13	BUSHING	1
04-701-09	PIN (φ 6x15.8)	1	22-701-01	FILTER	1	52-700-04	WASHER	4
04-702-09	PIN (φ 7.5x29)	4	24-706-02	VALVE ROD	1	52-701-05	WASHER	8
05-700-01	PIN (φ 3x8)	1	25-704-03	AIR INLET	1	52-707-01	WASHER	1
05-701-03	PIN (φ 4x10)	2	30-308-03	PACKING	1	74-711-03	DRIVING ROD	1
05-702-04	PIN (φ 3x26)	1	30-308-04	PACKING	1	75-610-02	FRONT CAP	1
05-702-05	PIN (φ 4x26)	2	31-703-01	HOOK	1	78-311-01	HANDLE	1
06-701-21	SPRING	2	35-710-05	ROTOR	1	78-608-02	HANDLE	1
06-702-15	SPRING	1	36-607-02	FRONT PLATE	1	79-612-01	HANDLE	1
13-701-11	SCREW	1	37-607-02	REAR PLATE	1	80-707-01	CHUCK	1
13-702-02	SCREW	4	38-507-01	CYLINDER	1			

Chuck Size (mm)	Free Speed (rpm)	Max Torque (Nm)	Overall Length (mm)	Weight (kg)	Air Inlet Size	Air Pressure (psi)
16	1000		420	6.34	3/8"	90

--If you need to order parts, please mark both Parts NO. and Description.-- 2010/2/8