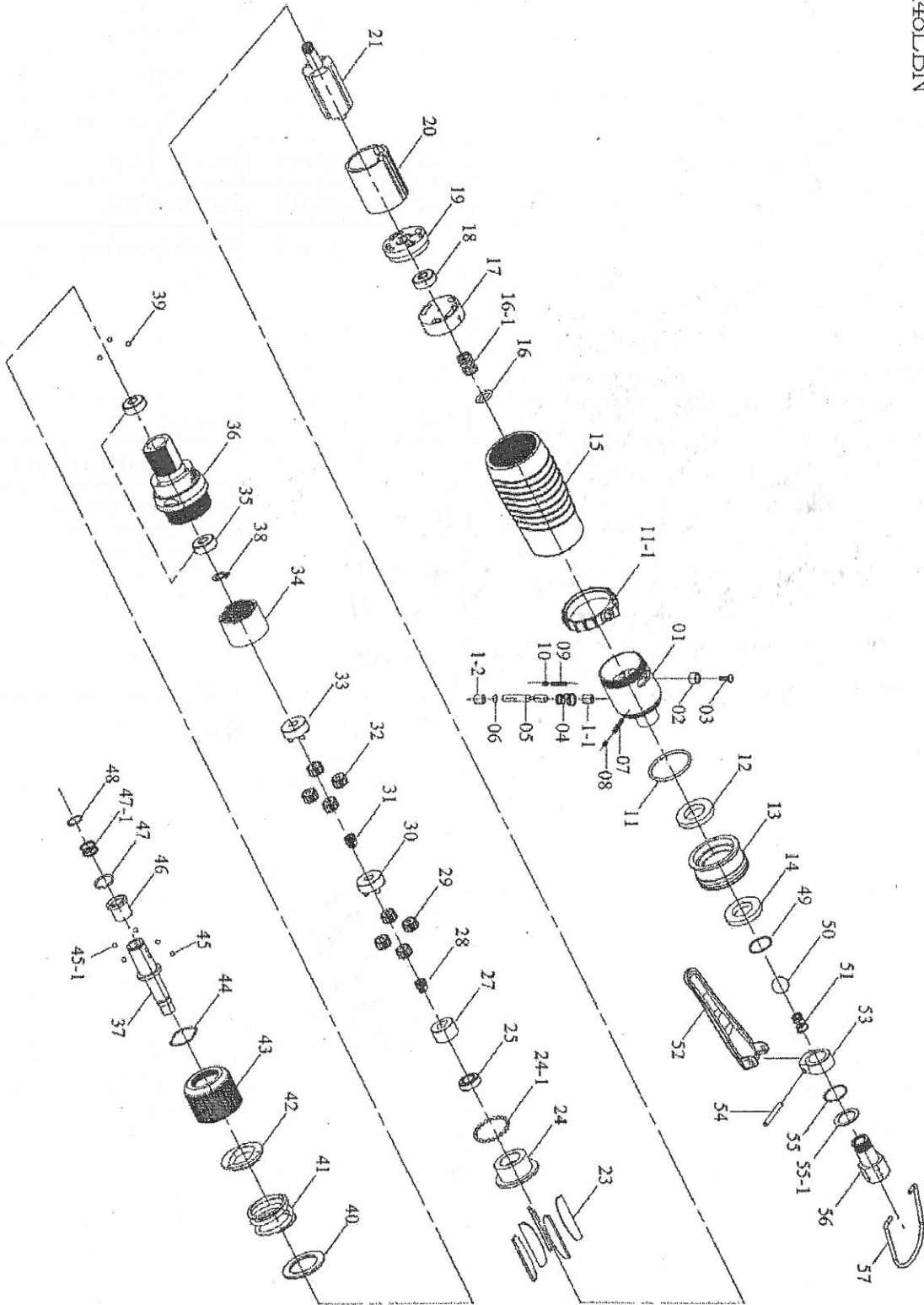


PNEUMATIC SCREWDRIVER MODEL NO.

SA-R48LBN

R48LBN



## PNEUMATIC SCREWDRIVER MODEL NO.

## SA-R48LBN

No.	Part No.	Part Name	Q'ty	No.	Part No.	Part Name	Q'ty
1	5A6029	End Housing	1	31	1G6271	21T Main Gear	1
1-1	2S3010	Inner Bushing	1	32	1P6111	10T Plate Gear	7
1-2	2S6001	Outer Bushing	1	33	1P6295	Third Gear Cage	1
2	2U6001	Switch Bushing	1	34	1S3157	Internal Gear	1
3	7S2108	Set Screw And Washer	1	35	7S2010	Ball Bearing	2
4	6N5113	Spring	1	36	5A5354	Clutch Housing	1
5	2S5019	Valve Pin	1	37	3S5052	Anvil	1
6	7Q6112	Valve O-Ring	1	38	6N2081	C Ring	1
7	6S2030	Screw	1	39	7S2105	Ball	3
8	7S2113	Screw	1	40	2S5233	Washer	1
9	6S2031-1	Screw	1	41	5N5210	Torque Spring (Black)	1
10	7S2150	Screw	1	42	3S3221	Regulation Washer	1
11	2Q2003	O Ring	1	43	3A6301	Torque Ring	1
11-1	2L6021	Switch (Green)	1	44	6N3301	C Ring	1
12	2P3021	Silencer	1	45	7S2112	Ball	3
13	2A6001	Exhaust Deflector	1	45-1	7S3108	Ball	2
14	2P3010	Silencer	1	46	5S2124	Bit Slide Sleeve	1
15	5A6042	Center Housing (Blue)	1	47	2S2111	Washer	1
16	7Q2011	Valve O-Ring	1	47-1	6N2132	Spring	1
16-1	6N5006	Spring	1	48	6N3302	C Ring	1
17	6S6105	Valve	1	49	7Q6100	O Ring	1
18	7S5001	Ball Bearing	1	50	7S2103	Ball	1
19	1S6001	End Plate	1	51	6N2105	Cone Spring	1
20	1P6005	Cylinder	1	52	5L6102	Lever	1
21	1S6048	Rotor	1	53	5A2002	Lever Set	1
23	1P6051	Blade	6	54	7S2202	Roll pin	1
24	1P6062	Front Plate	1	55	2Q5001	O Ring	1
24-1	7S2102	Ball	36	55-1	7L0002	Washer	1
25	7S2002	Ball Bearing	1	56	2S2010	Air Inlet Bushing [PT]	1
27	1S3050	Connect	1	56	2S6005	Air Inlet Bushing [PS]	1
28	1P2271	21T Main Gear	1	56	2S2007	Air Inlet Bushing [NPT]	1
29	1P2102	10T Plant Gear	7	57	5N2005	Suspension Ring	1
30	1P6294	Third Gear Cage	1				