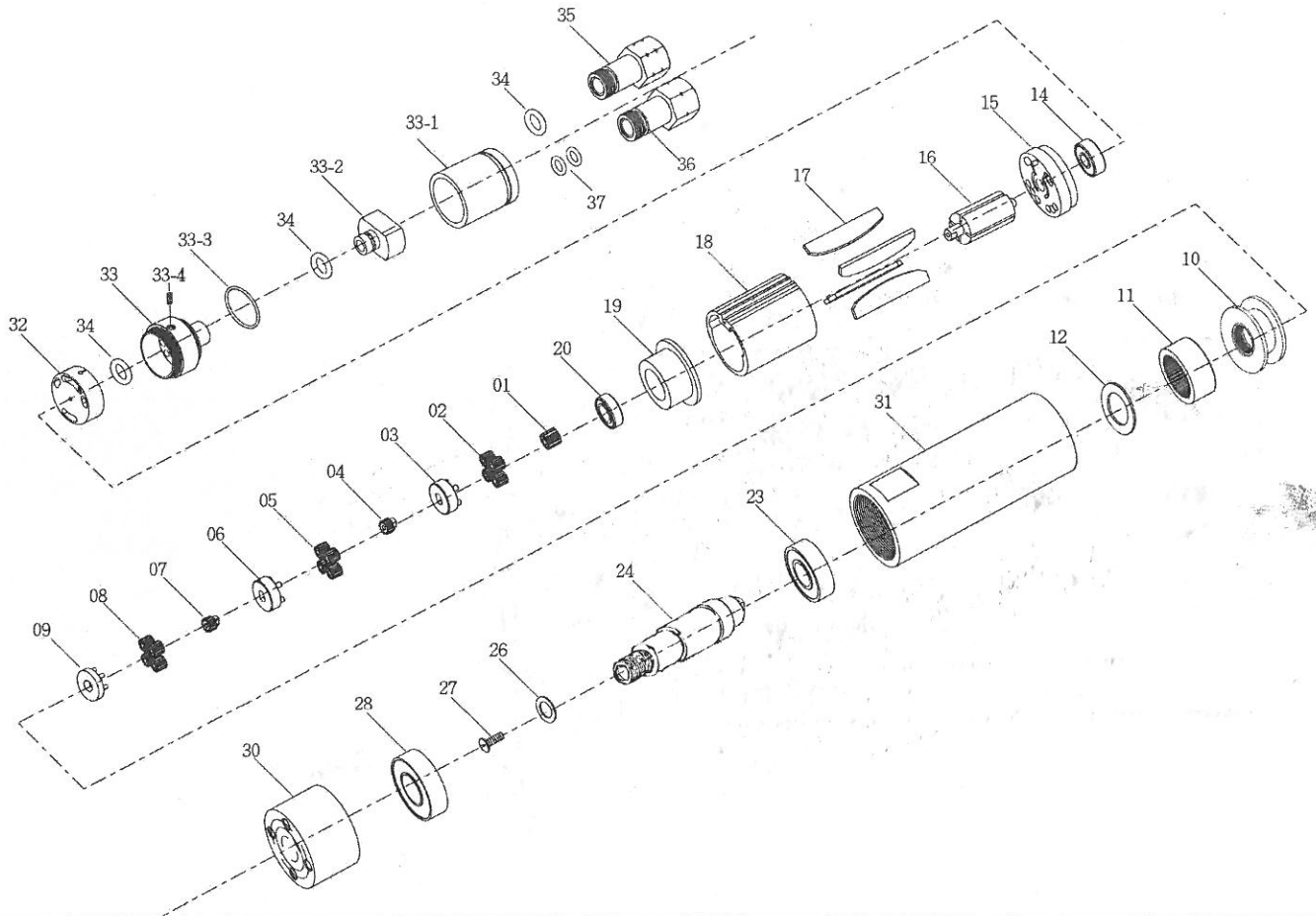


PNEUMATIC SCREWDRIVER MODEL NO.

SA-AM17168

AM17168



| No. | Part No. | Part Name | Q'ty | No. | Part No. | Part Name | Q'ty |
|-----|-----------|-----------------|------|------|----------|------------------------|------|
| 1 | 1P2274 | 18T Main Gear | 1 | 20 | 7S2002 | Ball Bearing | 1 |
| 2 | 1P2110 | 12T Plant Gear | 4 | 23 | 7S6003 | Ball Bearing | 1 |
| 3 | 1P2280 | Third Gear Cage | 1 | 24 | 1S6269 | Shaft | 1 |
| 4 | 1P2090 | 14T Main Gear | 1 | 26 | 7S5130 | Washer | 1 |
| 5 | 1P2130 | 14T Plant Gear | 4 | 27 | 7S5114 | Screw | 1 |
| 6 | 1P2290 | Fourth | 1 | 28 | 7S5017 | Ball Bearing | 1 |
| 7 | 1G6086 | 10T Main Gear | 1 | 30 | 5L2124 | Cap (Black) | 1 |
| 8 | 1P6120 | 15T Plant Gear | 1 | 31 | 5A6209 | Housing | 1 |
| 9 | 1P3283 | Fifth Gear Cage | 1 | 32 | 3P6040 | Valve | 1 |
| 10 | 1S6061 | Internal Gear | 1 | 33 | 5A6105 | End Housing (Black) | 1 |
| 11 | 1S6063 | Internal Gear | 1 | 33-1 | 2A6020 | Exhaust Deflector/O.E. | 1 |
| 12 | 4W6023 | Washer | 1 | 33-2 | 2A5001 | Connect/O.E. | 1 |
| 14 | 7S5001 | Ball Bearing | 1 | 33-3 | 2Q2003 | O Ring | 1 |
| 15 | 1S6001 | End Plate | 1 | 33-4 | 7S2111 | Screw | 1 |
| 16 | 1S6034-TE | Rotor | 1 | 34 | 2Q5001 | O Ring | 3 |
| 17 | 1P6049 | Blade | 4 | 35 | 2S5030 | Air Inlet Bushing [PT] | 1 |
| 18 | 1P6005 | Cylinder | 1 | 36 | 2S5031 | Air Exhaust [PT] | 1 |
| 19 | 1P3012 | Front Plate | 1 | 37 | 7Q2010 | O Ring | 2 |