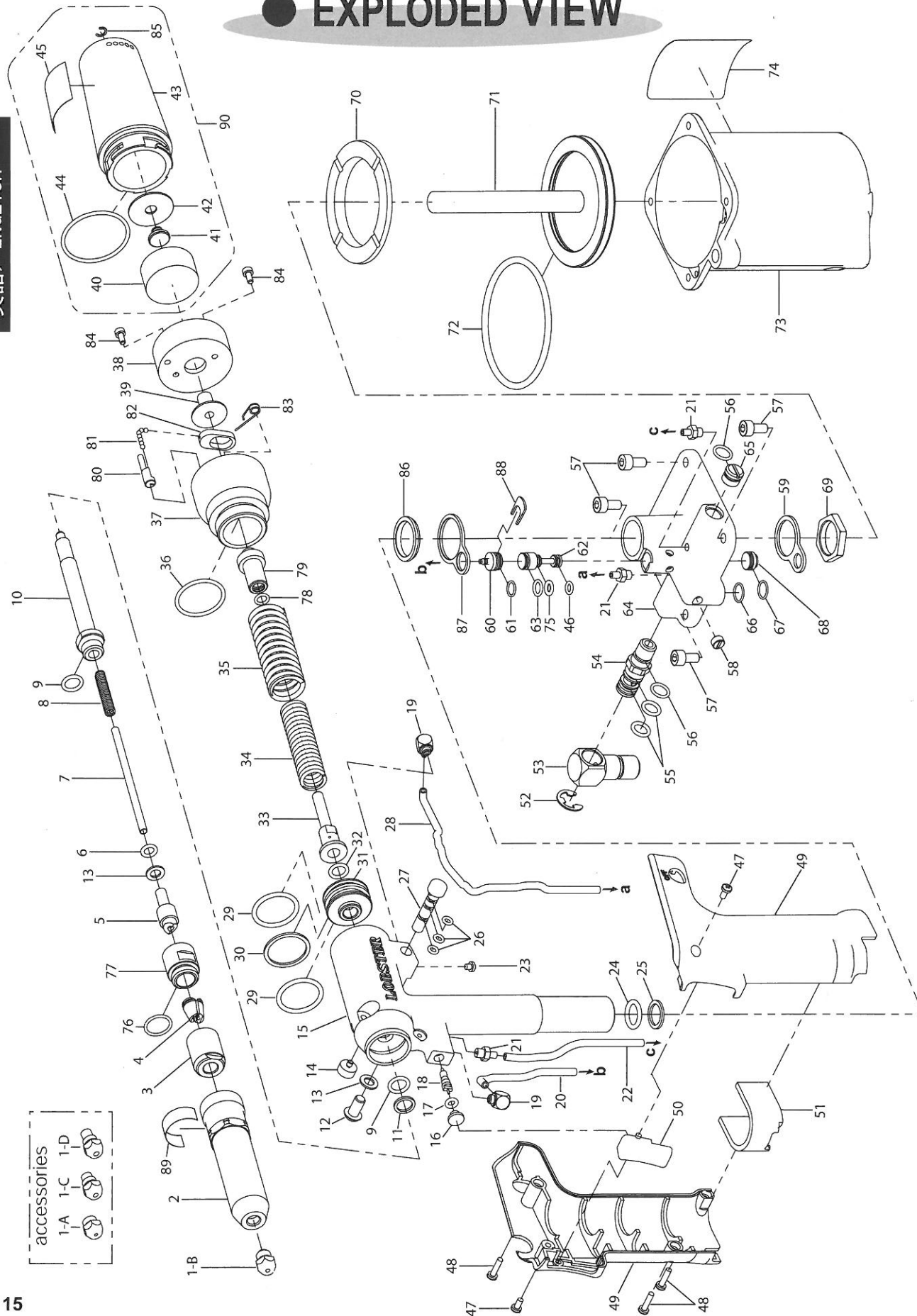


# EXPLODED VIEW



# PARTS LIST

Index No.	Part name	Code No.	Index No.	Part name	Code No.
1-A	Nosepiece 2.4 (3/32)	10027	45	Caution Label	22040
1-B	Nosepiece 3.2 (1/8)	10028	46	O-ring S5	10276
1-C	Nosepiece 4.0 (5/32)	10029	47	Cross recessed pan head screw M3x6	63250
1-D	Nosepiece 4.8 (3/16)	10030	48	Tapping Screw for synthetic resin M3x12	63251
2	Frame Head 'CJM'	64055	49	Grip Cover LR	63263
③	Jaw Case Head	10116	50	Trigger	63227
④	Ultra Jaws (pair) 'M'	10281	⑤①	Silencer Sponge	63968
⑤	Jaw Pusher	63410	52	E-type Retaining Ring 8	63186
⑥	O-ring P6	10150	53	Rotary Joint	63184
⑦	Guide Tube SUS	64875	54	Spool Connector	63185
⑧	Jaw Pusher Spring	63222	55	O-ring P8	10336
9	O-ring P9	10219	56	O-ring S9	63180
10	Oil Piston	63195	57	Hex Socket Head Cap Screw M5 × 10	64409
11	B-ring P9	13012	58	Stop screw mass production	63245
12	Bleed plug	63213	59	Air Valve Head Retainer	63183
13	Sealing Washer	63209	60	Air Valve Head	63979
14	Vacuum Stop Button	63207	61	O-ring SS7.5	63181
15	Frame 'A'	64874	62	Air Valve	63174
16	Switch	63204	63	O-ring S7	12114
17	O-ring P4	10454	64	Cylinder Cap 'A'	64873
18	Valve Core	63203	65	Spool Cap	63175
19	Barb Elbow for Soft Tube	63226	66	O-ring SS9.5	63969
20	Urethane Tube 70	63211	67	O-ring SS9	63182
21	Barb Coupling for Soft Tube	43732	68	Valve Cap	63177
22	Urethane Tube 87	63210	69	Frame Fixing Nut	63228
23	Cross Recessed Pan Head Screw M3x3	63247	70	Cushion Rubber	63178
24	O-ring P12	10128	71	Air Piston Set	63170
25	B-ring P12	10129	72	O-ring 0670G	63244
26	O-ring S4	29664	73	Cylinder Cup	63220
27	Vacuum Stop Valve	63205	74	Warning Label	61075
28	Urethane Tube 153	63212	75	O-ring P5	12120
29	O-ring P22	10180	⑦⑥	O-ring S10	10151
30	B-ring P22	10181	⑦⑦	Jaw Case 'CJM'	64054
31	Oil Piston Flange	63187	78	O-ring S6	10220
32	O-ring P8 (1B)	63194	79	Inner shaft of frame cap	64403
33	Oil Piston Backward Axis 'A'	64399	80	Shutter Lever	64400
34	Return Spring IN	63241	81	Ball Chain	64406
35	Return Spring OUT	63242	82	Shutter Body	64401
36	O-ring S25	63243	83	Helical torsion spring of shutter	64404
37	Frame Cap 'A'	64405	84	Hex Socket Head Cap Screw M3 × 7	64410
38	Tank Joint	63237	85	Crescent type Retaining Ring 21	29187
39	Outer shaft of frame cap	64402	86	Bush	64871
④⑩	Tank Case Sponge	63252	87	Air Valve Head Retainer R1A2	63960
41	Screw for inner surface of tank case	63231	88	Air Valve Head Rock Plate	63961
42	Inner surface of tank case	63230	89	Frame Head Seal	64598
43	Tank Case	63215	90	Tank Case Unit	63277
44	O-ring S36	63234			

- Note**
- Parts with circled Index No. are consumable parts. They should be replaced periodically.
  - Part no. 5 includes part no. 6, 13.
  - Part no. 43 includes part no. 45.
  - Part no. 73 includes part no. 74.
  - Part no. 77 should be attached part no. 76.