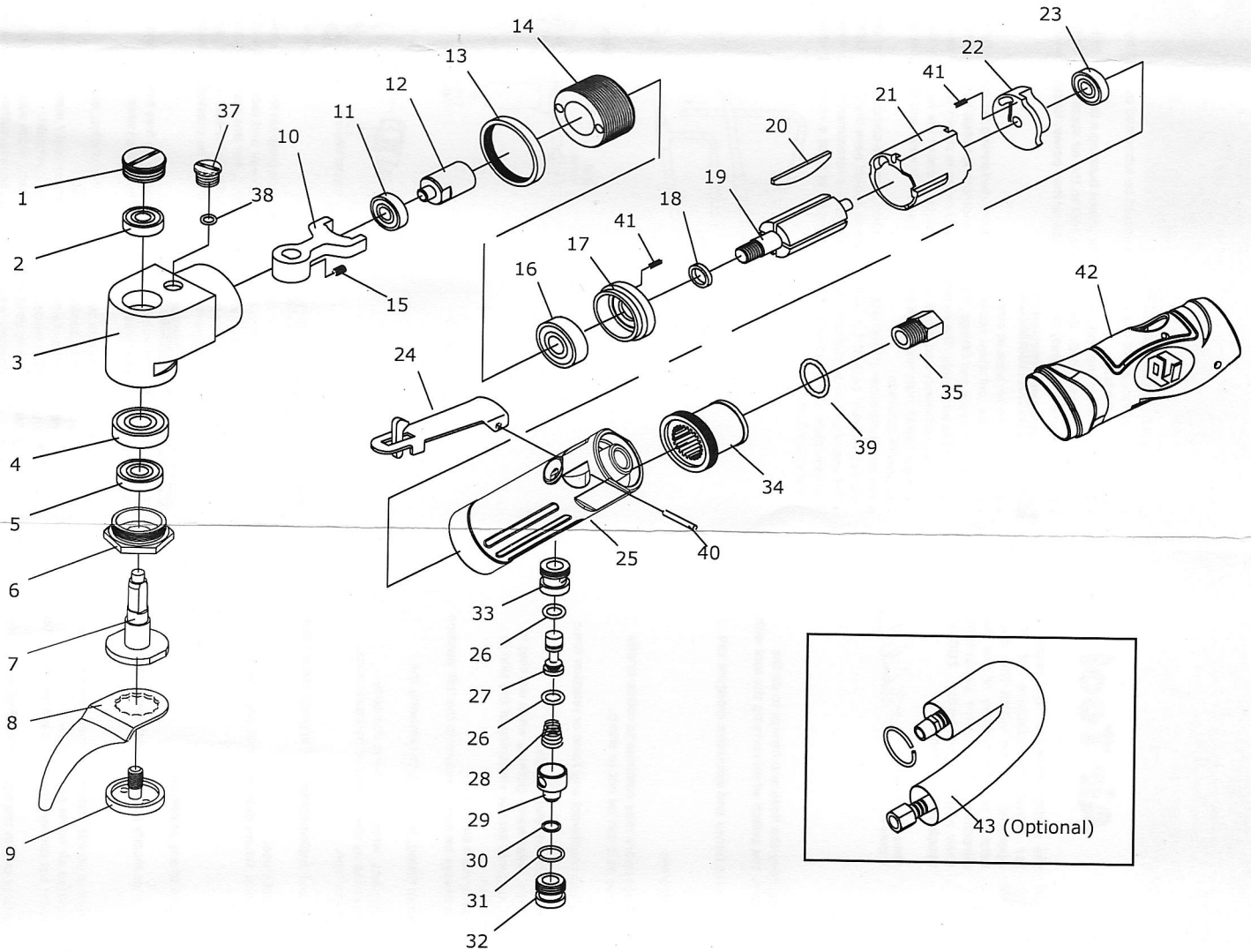


| Technical Details | Speed RPM | Power KW/HP | Length mm/inch | Weight kg/lb | Air Consumption LPM / CFM | Noise (DB) LpA LwA | Uncertainty(DB) KpA KwA | Vibration m/s ² | Air Inlet inch | Pressure Bar / PSI |
|-------------------|--------------|----------------|-------------------|-----------------|------------------------------|-----------------------|----------------------------|-------------------------------|-------------------|-----------------------|
| 80020 | 20,000 | 0.37 (0.5) | 205(8.1) | 1.0(1.1) | 110(3.9) | 91.5 102.5 | 3 | 7.94 | 1/4 | 6.2 / 90 |



| Index No. | Description | Quantity | Index No. | Description | Quantity | Index No. | Description | Quantity |
|-----------|--------------------|----------|-----------|-------------------|----------|-----------|-------------------------|----------|
| 1 | Plug | 1 | 15 | Set Screw | 1 | 29 | Air Regulator | 1 |
| 2 | 626 Ball Bearing | 1 | 16 | 6000 Ball Bearing | 1 | 30 | "O" Ring | 1 |
| 3 | Head | 1 | 17 | Front Plate | 1 | 31 | "O" Ring | 1 |
| 4 | 6000 Ball Bearing | 1 | 18 | Bearing Space | 1 | 32 | Throttle Valve Plug | 1 |
| 5 | Oil Seal | 1 | 19 | Rotor | 1 | 33 | Throttle Valve Bushing | 1 |
| 6 | Nut Clamp | 1 | 20 | Rotor Blade | 4 | 34 | Exhaust Deflector | 1 |
| 7 | Spindle Drive | 1 | 21 | Cylinder | 1 | 35 | Air Inlet | 1 |
| 8 | Blade 57mm(2-1/4") | 1 | 22 | End Plate | 1 | 37 | Oil Cover | 1 |
| 9 | Screw Retainer | 1 | 23 | 626 Ball BEaring | 1 | 38 | "O" Ring | 1 |
| 10 | Fork Drive | 1 | 24 | Throttle Lever | 1 | 39 | O-Ring | 1 |
| 11 | 607 Ball Bearing | 1 | 25 | Housing | 1 | 40 | Throttle Lever Pin | 1 |
| 12 | Shake Crank | 1 | 26 | "O" Ring | 2 | 41 | Roll Pin | 2 |
| 13 | Nut | 1 | 27 | Valve Stem | 1 | 42 | Grip | 1 |
| 14 | Retainer | 1 | 28 | Valve Spring | 1 | 43 | Exhaust Hose Set (26mm) | 1 |