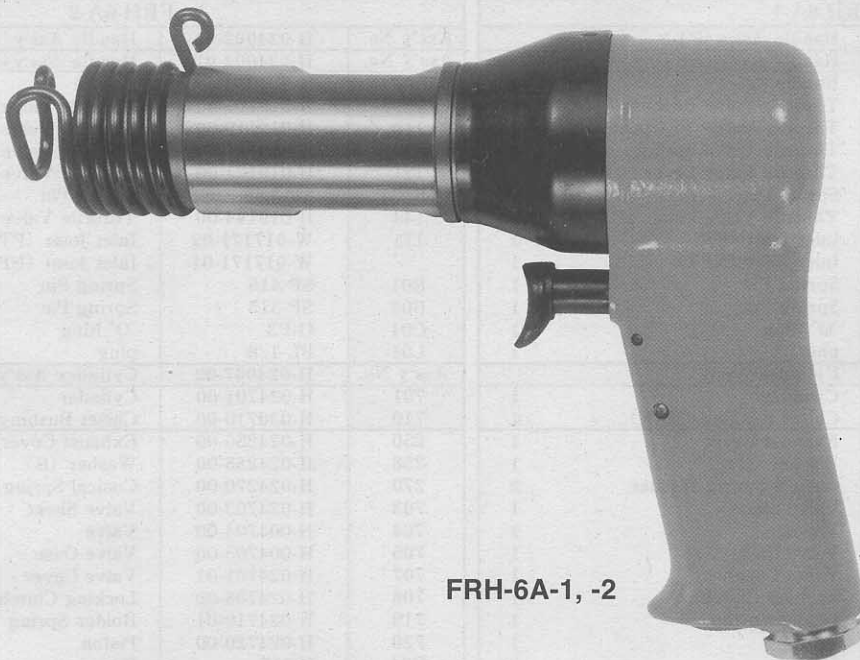




USER MANUAL

LIGHT HAMMERS

MODELS : FRH-6A-1, -2



FRH-6A-1, -2

SPECIFICATIONS

Model	Shape of Chisel Brush	Reveting Capacity (mm)		Blows Hz	Piston Diameter		Stroke		Overall Length		Mass		Air Consumption (At Load)		Air Inlet Thread Size		Air Hose Size	
		Duralmin	Steel		mm	in	mm	in	mm	in	kg	lb	Nm ³ /min	Nft ³ /min	in	mm	in	
FRH-6A-1	Hex	6.4	5.0	50	20.0	25/32	204	1 3/4	193	7 19/32	1.5	3.3	0.4	14.1	PT or NPT 1/4	9.5	3/8	
FRH-6A-2	Round	6.4	5.0	50	20.0	25/32	204	1 3/4	193	7 19/32	1.5	3.3	0.4	14.1	PT or NPT 1/4	9.5	3/8	

* Used for auto Chisel.

* Avoid unnecessary idling causing the unexpected tool's troubles.

*The performance figures are at 0.63MPa(6.3bar).



Refer to "The Instructions and Warning for Safety Use" enclosed in each tool box.

FUJI AIR TOOLS CO., LTD.

2-1-14 Kamiji, Higashinari-ku, Osaka, 537-0003 Japan
 Tel : (06) 6972-2335
 Fax : (06) 6972-2250

BOLT & NUT SETTERS
SCREW DRIVERS

ABRASIVE TOOLS

DRILLS · TAPPERS

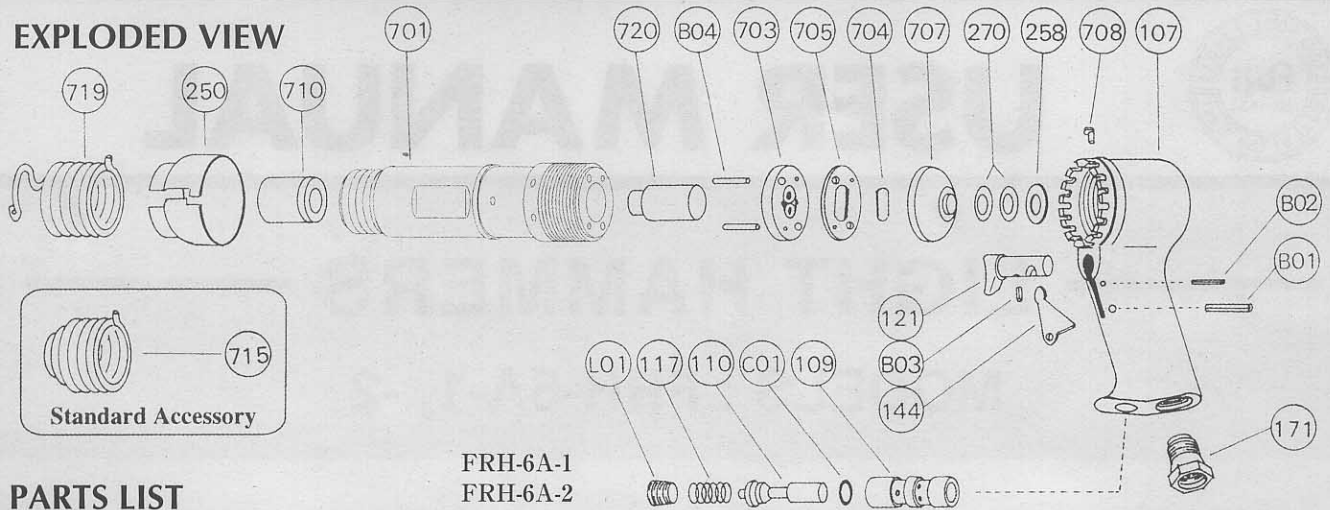
PERCUSSION TOOLS

AIR MOTORS & OTHERS

OTHER PRODUCTS

PARTS LIST MODEL: FRH-6A-1, -2

EXPLODED VIEW



PARTS LIST

FRH-6A-1
FRH-6A-2

Index No.	Parts No.	Parts Name	Qt.	Index No.	Parts No.	Parts Name	Qt.
FRH-6A-1				FRH-6A-2			
Ass'y No.	H-024002-00	Handle Ass'y (PT)		Ass'y No.	H-024002-00	Handle Ass'y (PT)	
Ass'y No.	H-024002-01	Handle Ass'y (NPT)		Ass'y No.	H-024002-01	Handle Ass'y (NPT)	
107	H-024002-50	Handle	1	107	H-024002-50	Handle	1
(109)	H-019109-00	Throttle Valve Bushing	1	(109)	H-019109-00	Throttle Valve Bushing	1
110	H-019110-00	Throttle Valve	1	110	H-019110-00	Throttle Valve	1
117	H-019117-00	Throttle Valve Spring	1	117	H-019117-00	Throttle Valve Spring	1
121	H-019121-00	Throttle Valve Lever	1	121	H-019121-00	Throttle Valve Lever	1
(B03)	SP-3.56	Spring Pin	1	(B03)	SP-3.56	Spring Pin	1
144	H-019144-00	Throttle Valve Lever (B)	1	144	H-019144-00	Throttle Valve Lever (B)	1
171	W-017171-02	Inlet Joint (PT)	1	171	W-017171-02	Inlet Joint (PT)	1
	W-017171-01	Inlet Joint (NPT)	1		W-017171-01	Inlet Joint (NPT)	1
B01	SP-416	Spring Pin	1	B01	SP-416	Spring Pin	1
B02	SP-315	Spring Pin	1	B02	SP-315	Spring Pin	1
C01	O-P3	"O" Ring	1	C01	O-P3	"O" Ring	1
L01	PL-1/8	plug	1	L01	PL-1/8	plug	1
Ass'y No.	H-024007-01	Cylinder Ass'y		Ass'y No.	H-024007-02	Cylinder Ass'y	
701	H-024701-00	Cylinder	1	701	H-024701-00	Cylinder	1
710	H-030710-H	Chiset Bushing (HEX)	1	710	H-030710-00	Chiset Bushing (ROUND)	1
250	H-024250-00	Exhaust Cover	1	250	H-024250-00	Exhaust Cover	1
258	H-024258-00	Washer (B)	1	258	H-024258-00	Washer (B)	1
270	H-024270-00	Conical Spring Washer	2	270	H-024270-00	Conical Spring Washer	2
703	H-024703-00	Valve Sheet	1	703	H-024703-00	Valve Sheet	1
704	H-004704-00	Valve	1	704	H-004704-00	Valve	1
705	H-004705-00	Valve Case	1	705	H-004705-00	Valve Case	1
707	H-024701-01	Valve Cover	1	707	H-024701-01	Valve Cover	1
708	H-024708-00	Locking Clutch	1	708	H-024708-00	Locking Clutch	1
719	H-024719-01	Holder Spring	1	719	H-024719-01	Holder Spring	1
720	H-024720-00	Piston	1	720	H-024720-00	Piston	1
B04	P-316	Pin	2	B04	P-316	Pin	2

□ Ass'y No. denotes no. of the assembled parts comprising of more than 1 pc. of parts. The related parts are shown in the thick frame.

□ # 107 and 121 are supplied together with parts shown in ().

□ Specify parts number and quantity in ordering.

■ Standard Accessories :

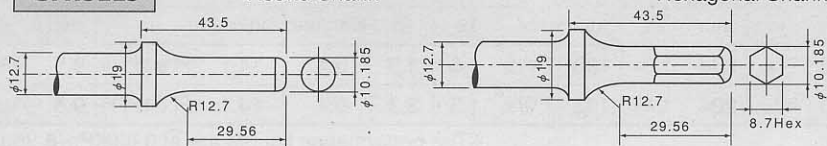
H-024715.....Holder Spring (B) 1.

OPTIONAL PARTS

CHISELS

FRH-6A-2
Round Shank

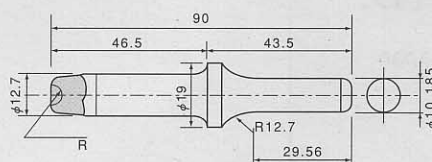
FRH-6A-1
Hexagonal Shank



Index No.	Round	Hexagonal	Part Name	
	AC No.	AC No.		
808	WA-808	WA-808H	Muffler Splitter	
809	WA-809	WA-809H	Panel Cutter	
810	WA-810	WA-810H	Cold Chisel	
812	WA-812	WA-812H	Punch	
813	WA-813	WA-813H	Rivet Cutter	
814	WA-814	WA-814H	Straight Punch	
815	WA-815	WA-815H	Spot Weld Breaker	

RIVET SNAPS

FRH-6A-2



AC No.	Size (R)		Rivet Size	
	mm	in	mm	in
SNAP-3	30	1/8	3	1/8
SNAP-4	37	9/64	4	5/32
SNAP-5	48	3/16	5	3/16
SNAP-6	51	13/64	6	1/4