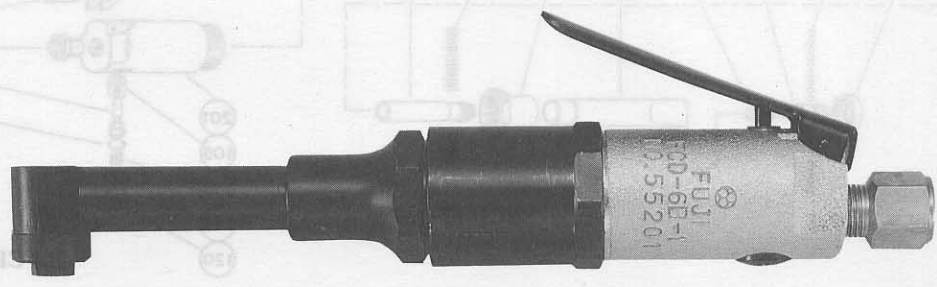




USER MANUAL

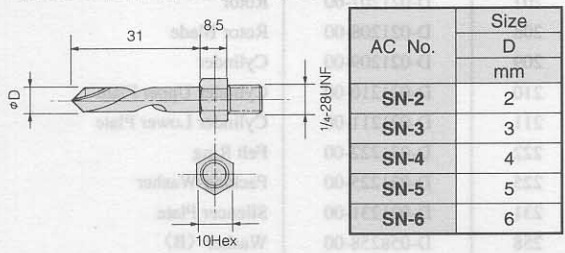
BABY ANGLE DRILLS

MODELS : FCD-6B-1,-1F



FCD-6B-1

Snake Drill for FCD-6B



FCD-6B-1F

SPECIFICATIONS

Model	Drilling Capacity (about)		Stall Torque (about)			Free Speed (about)	Size of Spindle Tapped Part		Side to Center (about)		Overall Length (about)		Weight (about)		Air Consumption at Max. Output (about)		Air Hose Size	
	mm	in	N·m	kgf·cm	ft·lbs	rpm	in		mm	in	mm	in	kg	lb	Nm ³ /min	ft ³ /min	mm	in
FCD-6B-1	6	1/4	2.5	25	1.8	2,500	1/4-28 UNF		9.5	3/8	222	8 ⁴⁷ /64	0.6	1.3	0.28	9.8	6.3	1/4
FCD-6B-1F	6	1/4	2.5	25	1.8	2,500	1/4-28 UNF		9.5	3/8	222	8 ⁴⁷ /64	0.6	1.3	0.28	9.8	6.3	1/4

1/4" air inlet thread size. 6.3mm (1/4") air hose size.

The performance figures are at 620kPa (6.3 bar).

Refer to instructions and warning for safety use enclosed in each tool box.

FUJI AIR TOOLS CO., LTD.

1-14, Kamiji 2-chome, Higashinari-ku, Osaka, 537 Japan
 Tel : (06) 972-2335
 Fax : (06) 972-2250

BOLT & NUT SETTERS
SCREW DRIVERS

ABRASIVE TOOLS

DRILLS · TAPPERS

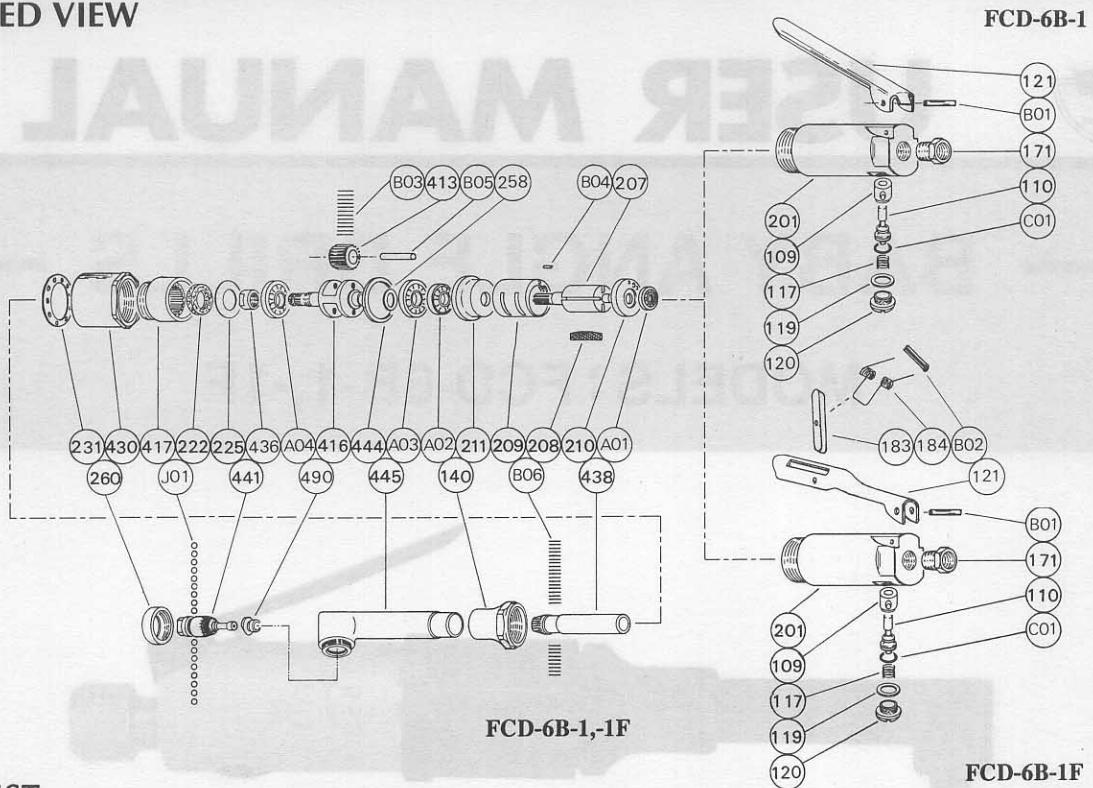
PERCUSSION TOOLS

AIR MOTORS & OTHERS

OTHER PRODUCTS

PARTS LIST MODEL : FCD-6B-1,-1F

EXPLODED VIEW



PARTS LIST

Index No.	Parts No.	Parts Name	Qt.
FCD-6B-1			
CP No.	D-021006-00	Housing CP	
201	D-021006-50	Housing	1
(109)	D-021109-00	Throttle Valve Bushing	1
110	D-021110-A	Throttle Valve	1
117	D-021117-00	Throttle Valve Spring	1
119	D-021119-00	T.V. Cover Packing	1
120	D-021120-00	Throttle Valve Cover	1
121	D-021121-A	Throttle Valve Lever	1
171	IB-202000	Inlet Bushing <PT>	1
171	IB-202N00	Inlet Bushing <NPT>	1
B01	SP-320	Spring Pin	1
C01	O-P3	"O" Ring	1
FCD-6B-1F			
CP No.	D-021006-02	Housing CP	
201	D-021006-50	Housing	1
(109)	D-021109-00	Throttle Valve Bushing	1
110	D-021110-A	Throttle Valve	1
117	D-021117-00	Throttle Valve Spring	1
119	D-021119-00	T.V. Cover Packing	1
120	D-021120-00	Throttle Valve Cover	1
171	IB-202000	Inlet Bushing <PT>	1
171	IB-202N00	Inlet Bushing <NPT>	1
B01	SP-320	Spring Pin	1
C01	O-P3	"O" Ring	1
CP No.	D-021019-00	Lock Lever CP	
121	A-122121-00	Throttle Valve Lever	1
183	H-001183-00	Lock Key	1
184	G-144184-00	Lock Spring	1
B02	SP-218	Spring Pin	1

Index No.	Parts No.	Parts Name	Qt.
140	D-021140-00	Cup Nut	1
207	D-021207-00	Rotor	1
208	D-021208-00	Rotor Blade	4
209	D-021209-00	Cylinder	1
210	D-021210-00	Cylinder Upper Plate	1
211	D-021211-00	Cylinder Lower Plate	1
222	D-021222-00	Felt Ring	1
225	D-021225-00	Packing Washer	1
231	D-021231-00	Silencer Plate	1
258	D-058258-00	Washer 	1
260	D-022260-00	Bearing Case	1
413	D-021413-00	NO.1 Planet Gear	2
(B03)	NR-19.5	Needle Roller	24
416	D-021416-00	NO.1 Planet Gear Frame	1
417	D-021417-00	NO.1 Internal Gear	1
430	D-022430-00	NO.1 Gear Case	1
436	D-021436-00	Bearing Holder	1
438	D-021438-00	Spindle	1
441	D-022441-00	Spindle 	1
444	D-021444-00	Internal Gear Washer	1
445	D-022445-00	Spindle Case	1
490	D-021490-00	Spindle Bushing	1
A01	BB-634	Ball Bearing	1
A02	BB-626	Ball Bearing	1
A03	BB-EE3	Ball Bearing	1
A04	BB-EE3	Ball Bearing	1
B04	SP-26	Spring Pin	1
B05	NR-316.8	Needle Roller	2
B06	NR-1.29	Needle Roller	25
J01	B-2	Ball	17

CP No. denotes the assembled parts comprising of more than 1 pc. of parts. The related parts are shown in the thick frame.

201 and 413 are supplied together with parts shown in ().

Specify parts number and quantity in ordering.

■ Standard Accessory :

F-102.....9.5mm Open-End Wrench 1.

SN-66mm Snake Drill 1.