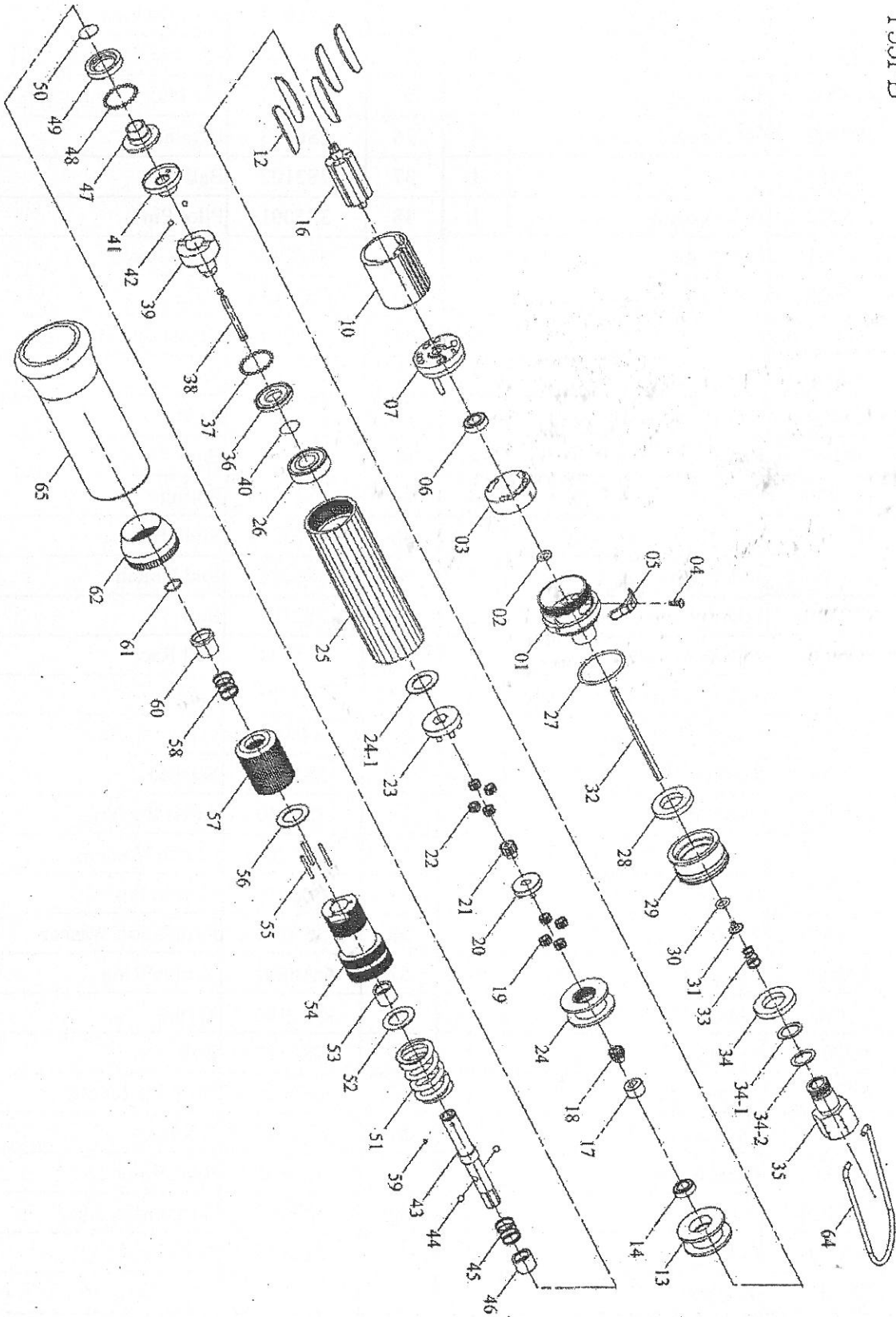


PNEUMATIC SCREWDRIVER MODEL NO.

F3T55PB

T55PB



PNEUMATIC SCREWDRIVER MODEL NO.

F3T55PB

No.	Part No.	Part Name	Q'ty	No.	Part No.	Part Name	Q'ty
1	5A6004	End Housing (Blue)	1	35	2S6003	Air Inlet Bushing [PT]	1
2	2Q5001	O Ring	1	35	2S3006	Air Inlet Bushing [PS]	1
3	2P6000	Valve	1	35	2S6004	Air Inlet Bushing [NPT]	1
4	7S2100	Set Screw And Washer	1	36	2S6103	Retainer	1
5	2L6010	Switch	1	37	7S2102	Ball	32
6	7S5002	Ball Bearing	1	38	3S5001	Pilot Pin	1
7	1S6001	End Plate	1	39	3S5211	Rear Clutch	1
10	1P6005	Cylinder	1	40	6N2006	C Ring	1
12	1P6050	Blade	5	41	3S5217	Center Clutch	1
13	1P6060	Front Plate	1	42	7S2112	Ball	2
14	7S2002	Ball Bearing	1	43	3S5021	Anvil	1
16	1S6043	Rotor	1	44	7S2105	Ball	2
17	1S3050	Connect	1	45	6N5110	Spring	1
18	1P2090	14T Main Gear	1	46	3S2227	Slide Base	1
19	1P2130	14T Plant Gear	4	47	3S5221	End Clutch	1
20	1P2290	Fourth Gear Cage	1	48	7S2102	Ball	25
21	1G6090	14T Main Gear	1	49	3S5231	Ball Race	1
22	1P6130	14T Plant Gear	4	50	6N2006	C Ring	1
23	1P6288	Fourth Gear Cage	1	51	6N5002	Torque Spring	1
24	1S6061	Internal Gear	1	52	2S5120	Washer	1
24-1	4W6023	Washer	1	53	3S2240	Anvil Bushing	1
25	5A6010	Center Housing (Blue)	1	54	3A5202	Clutch Housing	1
26	7S6003	Ball Bearing	1	55	6S2010	Needle Pin	3
27	2Q2003	O Ring	1	56	3S5101	Regulation Washer	1
28	2P3021	Silencer	1	57	3A6001	Torque Ring	1
29	2A6001	Exhaust Deflector	1	58	6N2103	Spring	1
30	7Q2006	O Ring	1	59	7S3107	Ball	1
31	6S2021	Valve Plate	1	60	5S2001	Bit Slide Sleeve	1
32	6S2005	Operating Rod	1	61	6N2001	C Ring	1
33	6N2104	Cone Spring	1	62	5A6020	Rear Housing	1
34	2P3010	Silencer	1	64	5N2001	Suspension Ring	1
34-1	2Q5001	O Ring	1	65	5L6010	Soft Cover	1
34-2	7L0002	Washer	1				