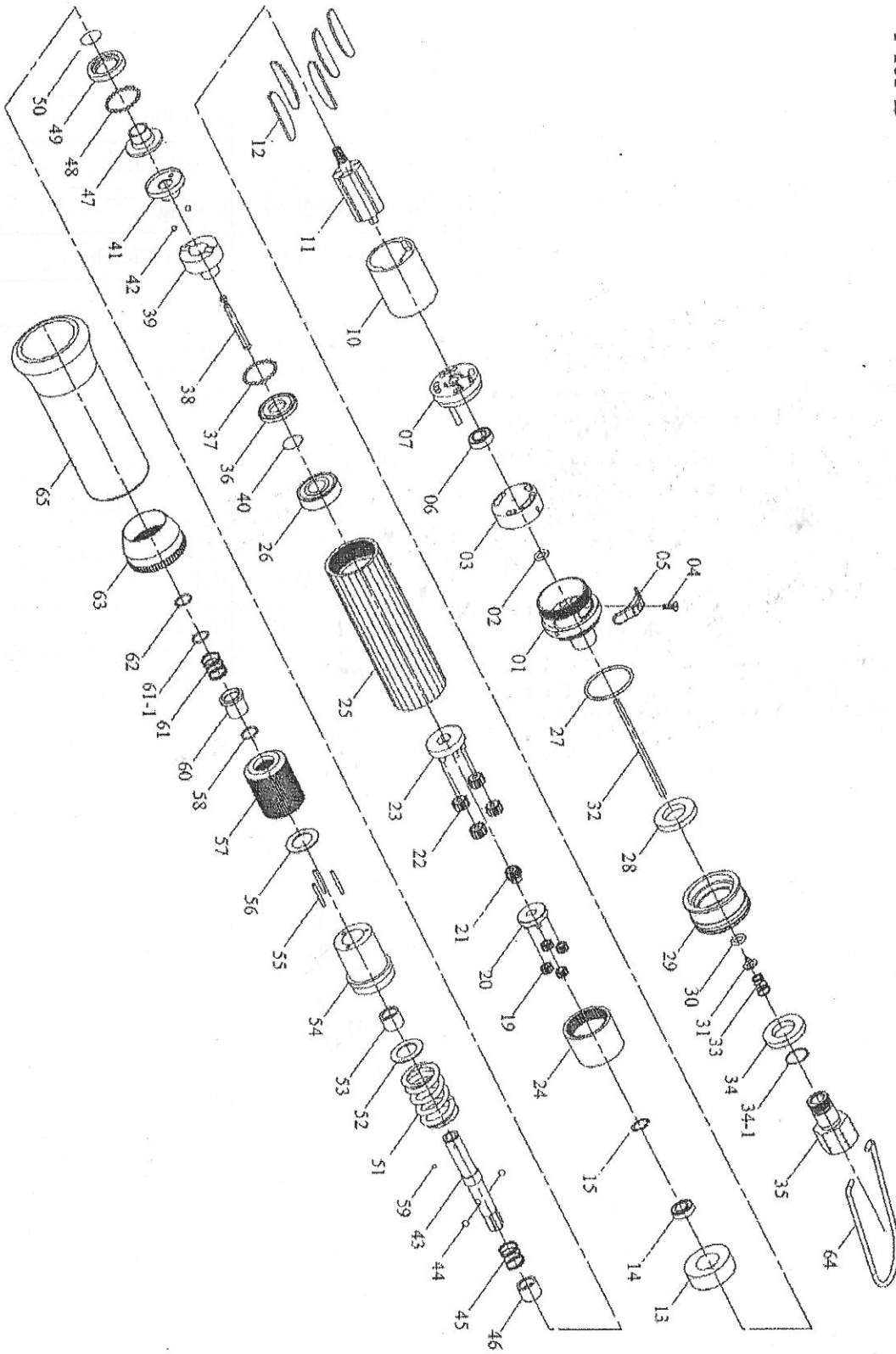


PNEUMATIC SCREWDRIVER MODEL NO.

F3T40PB

T40PB



PNEUMATIC SCREWDRIVER MODEL NO.

F3T40PB

No.	Part No.	Part Name	Q'ty	No.	Part No.	Part Name	Q'ty
1	5A3004	End Housing (Blue)	1	36	2S2103	Retainer	1
2	7Q2005	O Ring	1	37	7S2102	Ball	28
3	2P3000	Valve	1	38	3S2001	Pilot Pin	1
4	7S2158	Set Screw And Washer	1	39	3S2211	Rear Clutch	1
5	2L3010	Switch	1	40	6N2006	C Ring	1
6	7S2016	Ball Bearing	1	41	3S2215	Center Clutch	1
7	1S3001	End Plate	1	42	7S2112	Ball	2
10	1P3005	Cylinder	1	43	3S2030	Anvil	1
11	1S3040	Rotor	1	44	7S2105	Ball	2
12	1P3050	Blade	5	45	6N2110	Spring	1
13	1P3060	Front Plate	1	46	3S2226	Slide Base	1
14	7S2002	Ball Bearing	1	47	3S2222	End Clutch	1
15	6N2020	C Ring	1	48	7S2102	Ball	22
19	1P2101	15T Plant Gear	4	49	3S2231	Ball Race	1
20	1P3280	Fifth Gear Cage	1	50	6N3100	C Ring	1
21	1P2090	14T Main Gear	1	51	6N3005	Torque Spring	1
22	1P2130	14T Plant Gear	4	52	2S2120	Washer	1
23	1P2285	Fourth Gear Cage	1	53	3S2247	Anvil Bushing	1
24	1S2061	Internal Gear	1	54	3A2203	Clutch Housing	1
25	5A3010	Center Housing (Blue)	1	55	6S2011	Needle Pin	3
26	7S5003	Ball Bearing	1	56	3S3101	Regulation Washer	1
27	7Q2015	O Ring	1	57	3A3001	Torque Ring	1
28	2P3010	Silencer	2	58	6N2011	C Ring	1
29	2A3001	Exhaust Deflector	1	59	7S3107	Ball	1
30	7Q2007	O Ring	1	60	5S2009	Bit Slide Sleeve	1
31	6S2020	Valve Plate	1	61	6N2003	Spring	1
32	6S2009	Operating Rod	1	61-1	2S2109	Washer	1
33	6N2101	Cone Spring	1	62	6N2001	C Ring	1
34	2P3020	Silencer	1	63	5A3020	Rear Housing	1
34-1	2Q5001	O Ring	1	64	5N2001	Suspension Ring	1
35	2S2002	Air Inlet Bushing [PT]	1	65	5L3010	Soft Cover	1