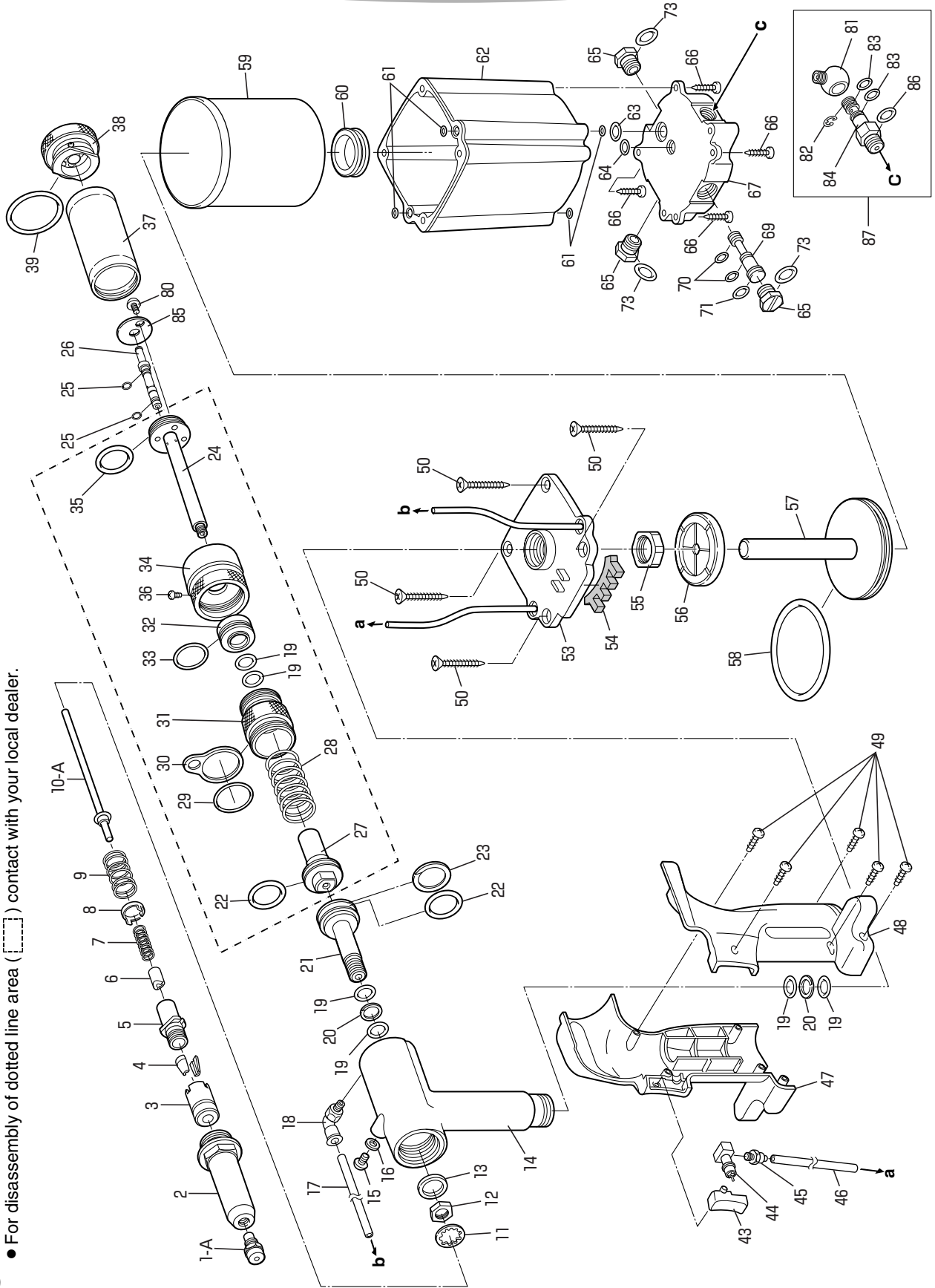
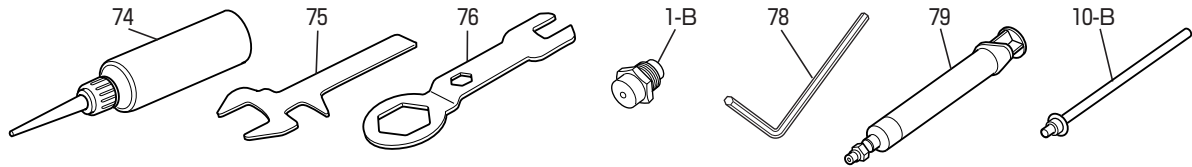


英語/ENGLISH

AR2000HV(A) PARTS TABLE

19 ● For disassembly of dotted line area () contact with your local dealer.





| Index No. | Part name | Code No. | Index No. | Part name | Code No. |
|-----------|--|----------|-----------|--------------------------------|----------|
| 1-A | Nosepiece 'L' 4.8 (3/16) | 10216 | 39 | O-ring P-34 | 24311 |
| 1-B | Nosepiece 'H' 6.4 (1/4) | 10226 | 43 | Switch | 29348 |
| 2 | Frame head 'H' | 29709 | 44 | Valve sleeve | 29350 |
| ③ | Jaw case head 'H' | 10447 | 45 | Miniature straight | 42510 |
| ④ | Ultra jaws (pair) 'H' | 10493 | 46 | Polyurethane tube 125 mm | 29729 |
| ⑤ | Jaw case 'H' | 10429 | 47 | Frame cover 'HA-R' | 44551 |
| ⑥ | Jaw pusher 'H' | 29710 | 48 | Frame cover 'HA-L' | 44552 |
| ⑦ | Jaw pusher spring 'H' | 29711 | 49 | Pan head tapping screw 3×10 | 29340 |
| 8 | Jaw case collar 'H' | 10448 | 50 | Flat head tapping screw 5×35 | 29367 |
| 9 | Collar spring 'H' | 10449 | 53*3 | Cylinder top | 43586 |
| 10-A | Guide pipe 'E' 4.8 (3/16) | 41203 | 54 | Muffler 'HA' | 44567 |
| 10-B | Guide pipe 'F' 6.4 (1/4) | 29752 | 55 | Frame lock nut 'H' | 29757 |
| 11 | Lock washer | 10148 | 56 | Rubber cushion 'H' | 29736 |
| 12 | Jaw case lock nut 'H' | 29712 | 57*4 | Air piston unit 'H' | 29758 |
| 13 | Stop ring | 23634 | 58 | O-ring P-70 | 10212 |
| 14*1 | Frame unit 'HA' | 44703 | 59 | Cylinder cup 'H' | 29741 |
| 15 | Bleed plug (Hexagon socket head cap screw) | 29337 | 60 | Grommet | 29361 |
| 16 | Pack seal 6 mm | 10355 | 61 | O-ring S-5 | 10276 |
| 17 | Polyurethane tube 230 mm | 29730 | 62 | Cylinder cover 'H' | 29740 |
| 18 | Connector | 29354 | 63 | O-ring P-10 | 10274 |
| 19 | O-ring P-12 | 10128 | 64 | O-ring P-7 | 10149 |
| 20 | B-ring P-12 | 10129 | 65 | Change plug | 29375 |
| 21 | Oil piston 'Z' | 41270 | 66 | Pan head tapping screw 4×20 | 29610 |
| 22 | O-ring P-24 | 10207 | 67 | Cylinder bottom 'H' | 29739 |
| 23 | B-ring P-24 | 10208 | 69 | Spool | 29612 |
| 24 | Back piston 'Z' | 41216 | 70 | O-ring P-5 (4D) | 29613 |
| 25 | O-ring S-7 | 12114 | 71 | O-ring P-8 (4D) | 29614 |
| 26 | Nozzle unit (with O-ring) | 41201 | 73 | O-ring P-9 | 10219 |
| 27 | Flange 'Z' | 41214 | 74 | "LOBSTER" brand hydraulic oil | 10012 |
| 28 | Return spring 'H' | 29726 | 75 | Spanner 'B' | 29642 |
| 29 | O-ring S-32 | 29727 | 76 | Spanner 'A' | 10217 |
| 30 | Hanger clip | 10192 | 78 | Hex key wrench 5 mm | 25777 |
| 31 | Frame cap 'HV' | 29690 | 79 | Priming pump (syringe unit) | 29624 |
| 31U | Frame cap unit 'HV' | 29831 | 80 | Cross recessed head screw 6×10 | 20916 |
| 32 | Air valve 'H' (with O-rings) | 29832 | 81 | Rotary joint | 42501 |
| 33 | O-ring S-24 | 10185 | 82 | Retaining ring E-7 | 10285 |
| 34*2 | Air controller 'Y' | 41222 | 83 | O-ring P-7 | 10149 |
| 35 | O-ring P-30 | 14445 | 84 | Nipple | 42479 |
| 36 | Pan head tapping screw 3×6 | 29670 | 85 | Plate | 41299 |
| 37 | Mandrel tank | 41146 | 86 | O-ring S-10 | 10151 |
| 37U | Mandrel tank unit (with cap) | 41149 | 87 | Rotary joint unit | 42502 |

*1 Part no. 14 includes part nos. 13, 15, 16, 19 and 20. *3 Part no. 53 includes part nos. 17, 44, 45, 46 and 54.
 *2 Part no. 34 includes part no. 36. *4 Part no. 57 includes part nos. 56 and 58.
 Parts with circled Index No. are consumable parts. They should be replaced periodically.

38 | Tank Cap (with O-Ring) | 29703

ORDERING PARTS

Indicate the tool model, part name, code no. and quantity as shown below when ordering.

| Model | Part Name | Code No. | Qty. |
|-------------|-----------------------|----------|------|
| AR2000HV(A) | Ultra jaws (pair) 'H' | 10493 | 1 |
| AR2000HV(A) | Frame head 'H' | 29709 | 1 |

* When parts are modified for improvement, the older parts are kept in stock for a period of five years.