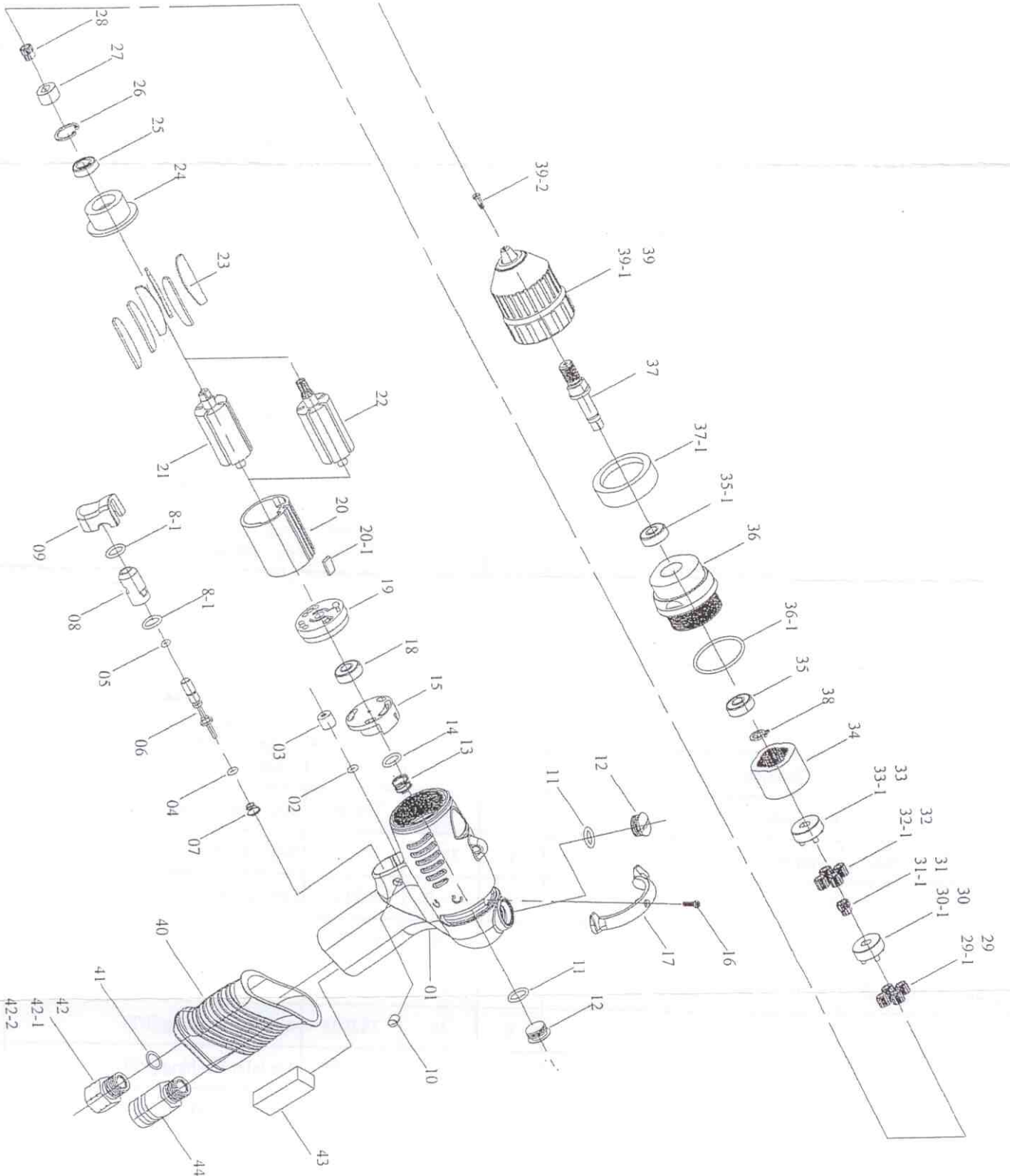


PNEUMATIC SCREWDRIVER MODEL NO.

SA-R48PD SA-R58PD
SA-R62PD



PNEUMATIC SCREWDRIVER MODEL NO.

SA-R48PD SA-R58PD
SA-R62PD

No.	Part No.	Part Name	Q'ty	No.	Part No.	Part Name	Q'ty
1	5L2100	Pistol Housing	1	28	1P2271	21T Main Gear [R48]	1
2	7Q2008	O Ring	1	29	1P2102	10T Plant Gear [R48]	7
3	2C2003	Blank Cap	1	29-1	1P2101	15T Plant Gear [R58 R62]	4
4	7Q2006	O Ring	1	30	1P6294	Third Gear Cage [R48]	1
5	7Q6112	Valve O-Ring	1	30-1	1P3280	Fifth Gear Cage [R58 R62]	1
6	6S2023	Valve Pin	1	31	1G6271	21T Main Gear [R48]	1
7	6N2106	Cone Spring	1	31-1	1G6090	14T Main Gear [R58 R62]	1
8	6S2024	Valve Bushing	1	32	1P6111	10T Plant Gear [R48]	7
8-1	7Q2009	O Ring	2	32-1	1P6130	14T Plant Gear [R58 R62]	4
9	5L2102	Button	1	33	1P6295	Third Gear Cage [R48]	1
10	5L2112	Cap	2	33-1	1P6288-1	Fourth Gear Cage [R58 R62]	1
11	2Q5001	O Ring	2	34	1S2061	Internal Gear	1
12	2S2011	Screw Cap	2	35	7S2010	Ball Bearing	1
13	6N5006	Spring	1	35-1	7S2008	Ball Bearing	1
14	7Q2011	Valve O-Ring	1	36	5A5355	Clutch Housing	1
15	6S6106	Valve	1	36-1	2Q2003	O Ring	1
16	7S2107	Set Screw And Washer	1	37	3S5042	Anvil	1
17	5L2103	Switch	1	37-1	7S3116	Aluminum Ring [R62]	1
18	7S5001	Ball Bearing	1	38	6N2081	C Ring	1
19	1S6001-A	End Plate	1	39	7S3109	Drill Chuck [R48 R58]	1
20	1P6005	Cylinder	1	39-1	7S3112	Drill Chuck [R62]	1
20-1	2S2023	Key	1	39-2	7S2117	Left Screw	1
21	1S6048	6T Rotor [R48]	1	40	5L2104	Pistol Cover	1
22	1S6047	10T Rotor [R58 R62]	1	41	2Q5001	O Ring	1
23	1P6051	Blade	6	42	2S2005	Air Inlet Bushing [PT]	1
24	1P6063	Front Plate	1	42-1	2S2008	Air Inlet Bushing [PS]	1
25	7S2002	Ball Bearing	1	42-2	2S2006	Air Inlet Bushing [NPT]	1
26	6N2020	C Ring [R58 R62]	1	43	2P3040	First Silencer	1
27	1S3050	Connect [R48]	1	44	2P3041	Second Silencer	1