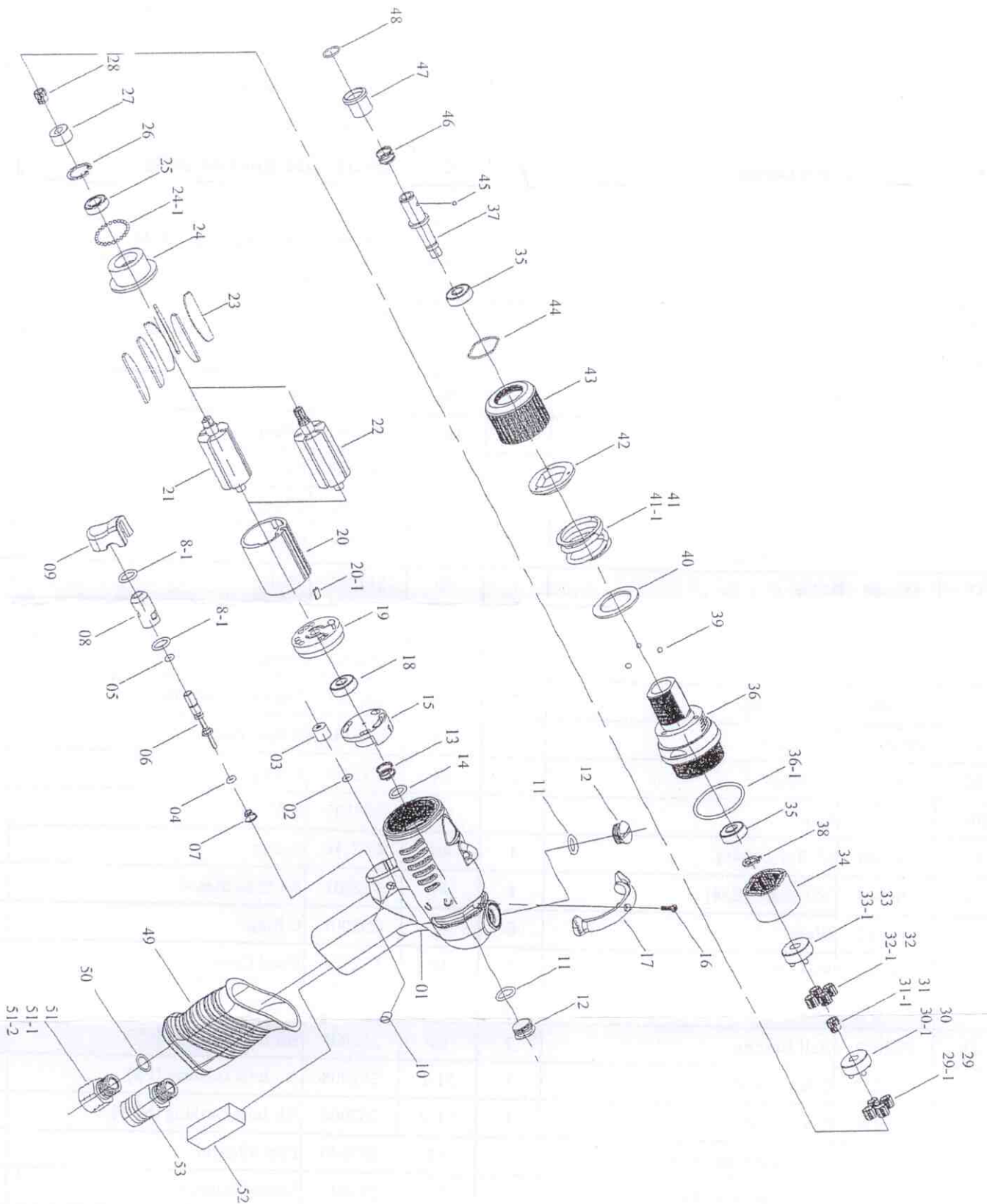


PNEUMATIC SCREWDRIVER MODEL NO.

SA-R48BPN SA-R58BPN



PNEUMATIC SCREWDRIVER MODEL NO.				SA-R48BPN SA-R58BPN			
No.	Part No.	Part Name	Q'ty	No.	Part No.	Part Name	Q'ty
1	5L2100	Pistol Housing	1	30	1P6294	Third Gear Cage [R48]	1
2	7Q2008	O Ring	1	30-1	1P3280	Fifth Gear Cage [R58]	1
3	2C2003	Blank Cap	1	31	1G6271	21T Main Gear [R48]	1
4	7Q2006	O Ring	1	31-1	1G6090	14T Main Gear [R58]	1
5	7Q6112	Valve O-Ring	1	32	1P6111	10T Plant Gear [R48]	7
6	6S2023	Valve Pin	1	32-1	1P6130	14T Plant Gear [R58]	4
7	6N2106	Cone Spring	1	33	1P6295	Third Gear Cage [R48]	1
8	6S2024	Valve Bushing	1	33-1	1P6288-1	Fourth Gear Cage [R58]	1
8-1	7Q2009	O Ring	2	34	1S3157	Internal Gear	1
9	5L2102	Button	1	35	7S2010	Ball Bearing	2
10	5L2112	Cap	2	36	5A5354	Clutch Housing	1
11	2Q5001	O Ring	2	36-1	2Q2003	O Ring	1
12	2S2011	Screw Cap	2	37	3S5040	Anvil	1
13	6N5006	Spring	1	38	6N2081	C Ring	1
14	7Q2011	Valve O-Ring	1	39	7S2105	Ball	3
15	6S6106	Valve	1	40	2S5233	Washer	1
16	7S2107	Set Screw And Washer	1	41	5N5210	Torque Spring[R48]	1
17	5L2103	Switch	1	41-1	6N5211	Torque Spring[R58]	1
18	7S5001	Ball Bearing	1	42	3S3221	Regulation Washer	1
19	1S6001-A	End Plate	1	43	3A6301	Torque Ring	1
20	1P6005	Cylinder	1	44	6N3301	C Ring	1
20-1	2S2023	Key	1	45	7S3107	Ball	1
21	1S6048	6T Rotor [R48]	1	46	6N2110	Spring	1
22	1S6047	10T Rotor [R58]	1	47	5S2001	Bit Slide Sleeve	1
23	1P6051	Blade	6	48	6N2001	C Ring	1
24	1P6062	Front Plate	1	49	5L2104	Pistol Cover	1
24-1	7S2102	Ball	36	50	2Q5001	O Ring	1
25	7S2002	Ball Bearing	1	51	2S2005	Air Inlet Bushing [PT]	1
26	6N2020	C Ring [R58]	1	51-1	2S2008	Air Inlet Bushing [PS]	1
27	1S3050	Connect [R48]	1	51-2	2S2006	Air Inlet Bushing [NPT]	1
28	1P2271	21T Main Gear [R48]	1	52	2P3040	First Silencer	1
29	1P2102	10T Plant Gear [R48]	7	53	2P3041	Second Silencer	1
29-1	1P2101	15T Plant Gear [R58]	4				