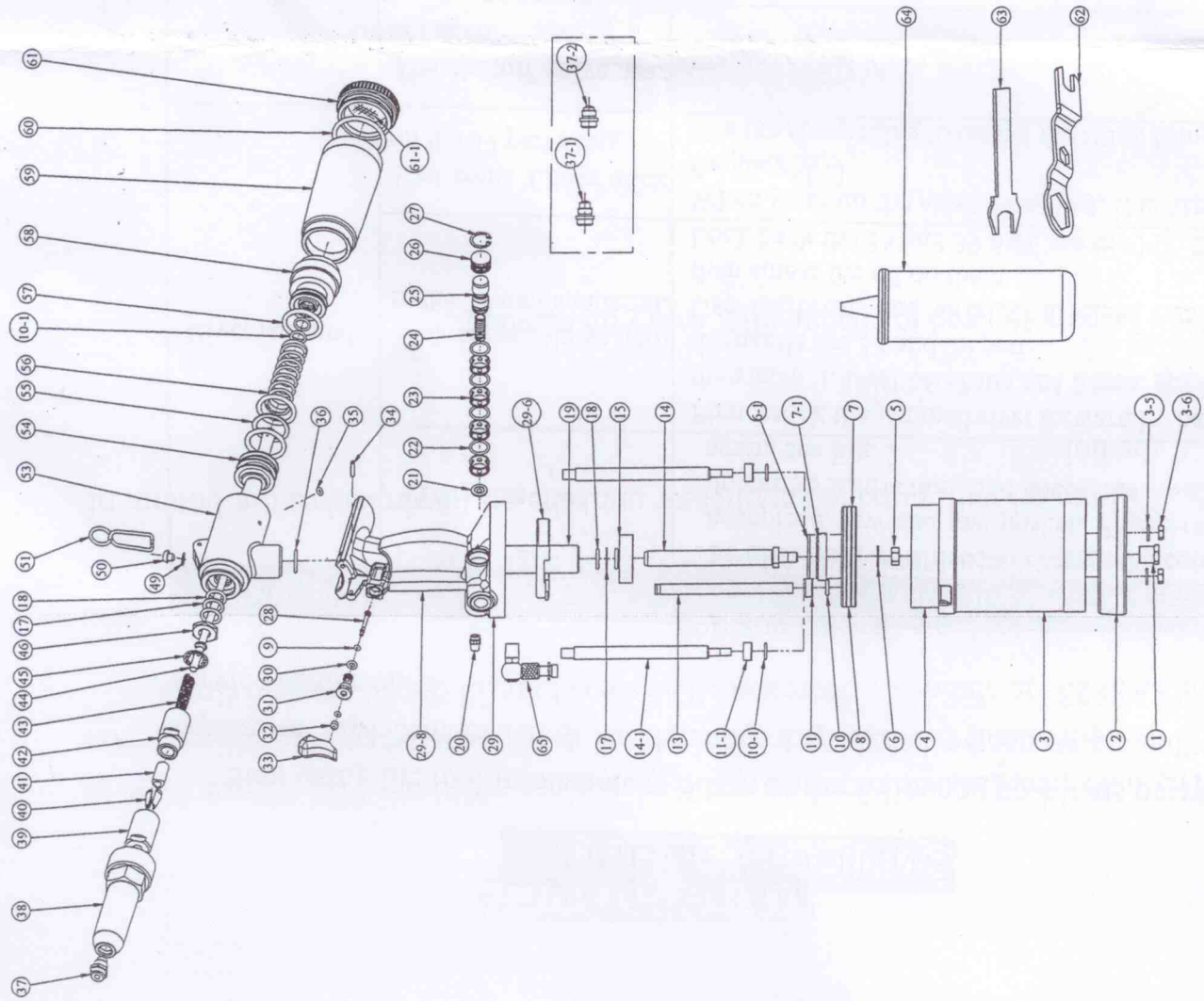


SA8823 / SA8823V



| Part No. | Part Name | Q'ty | Part No. | Part Name | Q'ty |
|----------|--------------------|------|----------|------------------------------------|------|
| 1 | SAFETY VALVE ASSY. | 1 | 30 | ORING | 1 |
| 2 | RUBBER BOTTOM | 1 | 31 | TIGGER INSERT | 1 |
| 3 | AIR CYLINDER BODY | 1 | 32 | TIGGER HEAD | 1 |
| 3-5 | WASHER | 2 | 33 | TRIGGER | 1 |
| 3-6 | NUT | 2 | 34 | SPRING PIN | 1 |
| 4 | LINER | 1 | 35 | ORING | 1 |
| 5 | NUT | 1 | 36 | ORING | 1 |
| 6 | WASHER | 1 | 37 | NOSEPIECE (1/4") | 1 |
| 6-1 | WASHER | 1 | 37-1 | NOSEPIECE(7/32") | 1 |
| 7 | AIR PISTON | 1 | 37-2 | NOSEPIECE(3/16") | 1 |
| 7-1 | CRASHWORTHY WASHER | 1 | 38 | FRAME HEAD | 1 |
| 8 | ORING | 1 | 39 | JAW HOUSING | 1 |
| 9 | ORING | 2 | 40 | JAW FOR(1/4", 7/32", 3/16") | 1 |
| 10 | ORING | 1 | 41 | JAW PUSHER FOR(1/4", 7/32", 3/16") | 1 |
| 10-1 | ORING | 2 | 42 | JAW HOUSING COUPLER | 1 |
| 11 | ORING DEPRESSOR | 1 | 43 | SPRING | 1 |
| 11-1 | ORING DEPRESSOR | 2 | 44 | PISTON SHAFT | 1 |
| 13 | TUBE | 1 | 45 | CASE WASHER | 1 |
| 14 | ROD | 1 | 46 | CASE LOCK NUT | 1 |
| 14-1 | ROD | 2 | 49 | OIL SEAL WASHER | 1 |
| 15 | STEM NUT | 1 | 50 | HEXAGON SOCKET SCREW | 1 |
| 17 | BACK-UP RING | 2 | 51 | HOOK | 1 |
| 18 | ORING | 4 | 53 | OIL CYLINDER BODY | 1 |
| 19 | STEM | 1 | 54 | PISTON ROD II | 1 |
| 20 | MUFFLER | 1 | 55 | BU-RING | 1 |
| 21 | PAD | 1 | 56 | SPRING | 1 |
| 22 | ORING | 4 | 57 | ORING | 3 |
| 23 | CAGE | 4 | 58 | FRAME CAP NUT | 1 |
| 24 | SPRING | 1 | 59 | SPENT MANDREL BOTTLE | 1 |
| 25 | VALVE | 1 | 60 | ORING | 1 |
| 26 | VALVE CAP | 1 | 61 | MANDREL BOTTLE ADAPTER | 1 |
| 27 | RETAINING RING | 1 | 61-1 | SILENCER | 1 |
| 28 | VALVE PISTON | 1 | 62 | SPANNER | 1 |
| 29 | HANDLE BODY | 1 | 63 | SPANNER GAUGE | 1 |
| 29-6 | NUT STAND | 1 | 64 | OIL CAN | 1 |
| 29-8 | HANDLE SHEATH | 1 | 65 | SHOUTOFF VALVE | 1 |