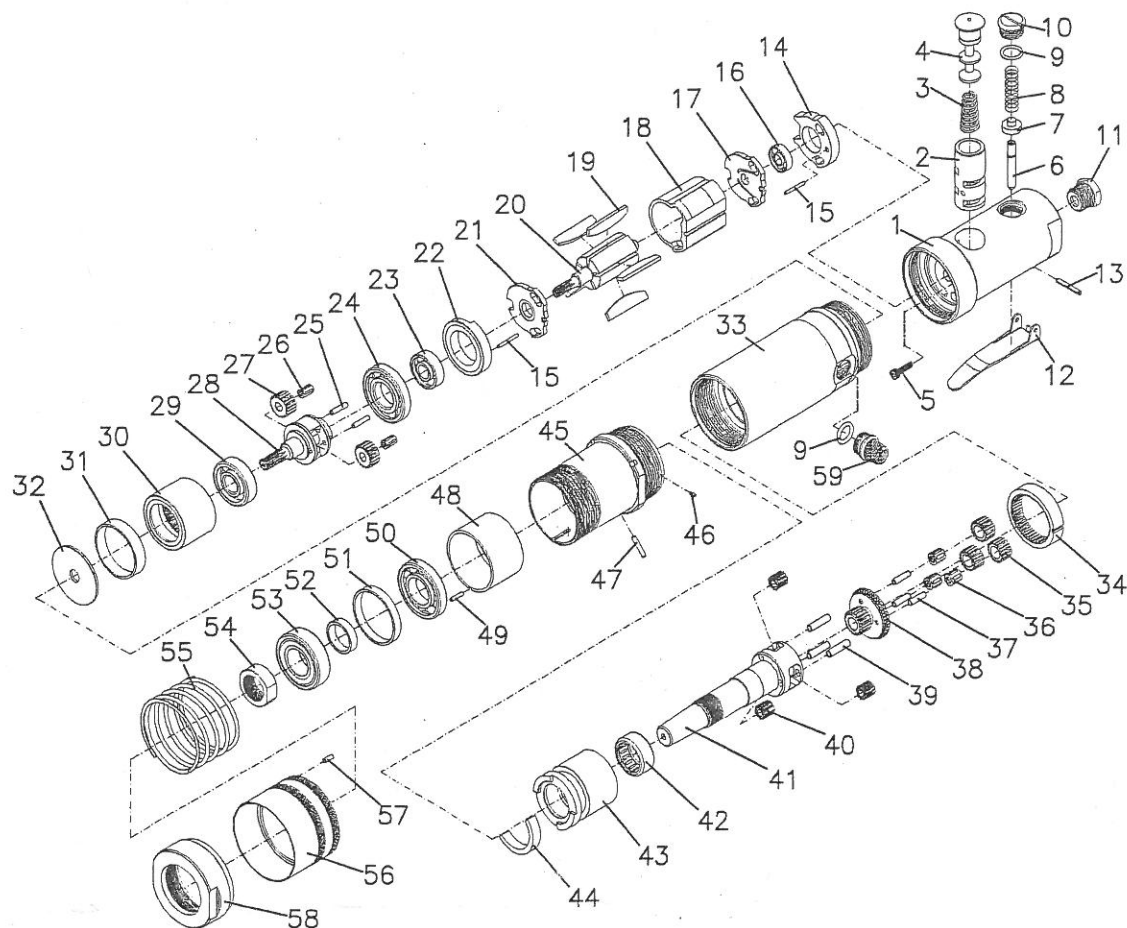


SA8228 High Torque Air Tapper (Two Speed:250RPM+90RPM)



Ref No.	Description
1	Housing
2	Reverse Bushing
3	Spring
4	Reverse Button
5	Screw
6	Valve Stem
7	Valve
8	Spring
9	O-Ring (2)
10	Valve Cap
11	Air Inlet
12	Throttle Lever
13	Pin
14	Rear Bearing Plate
15	Pin (2)
16	Ball Bearing
17	Rear End Plate
18	Cylinder
19	Rotor Blade (5)
20	Rotor
21	Front End Plate
22	Front Bearing Plate
23	Ball Bearing
24	Ball Bearing
25	Pin (2)
26	Needle Bearing (2)
27	Bevel Gear (2)
28	Planet Carrier
29	Ball Bearing
30	Internal Gear
31	Ring

Ref No.	Description
32	Washer
33	Body
34	Gear Ring
35	Bevel Gear (3)
36	Needle Bearing (3)
37	Gear Pin (3)
38	Planet Wheel
39	Pin (3)
40	Bevel Gear (3)
41	Planet Carrier
42	Needle Bearing
43	Speed Controller
44	Sliding Block
45	Nose Housing
46	Pin
47	Pin
48	Inner Sleeve
49	Pin
50	Ball Bearing
51	Spacer
52	Spacer
53	Ball Bearing
54	Nut
55	Spring
56	Speed Switch
57	Pin
58	Lock Nut
59	Silencer Cap