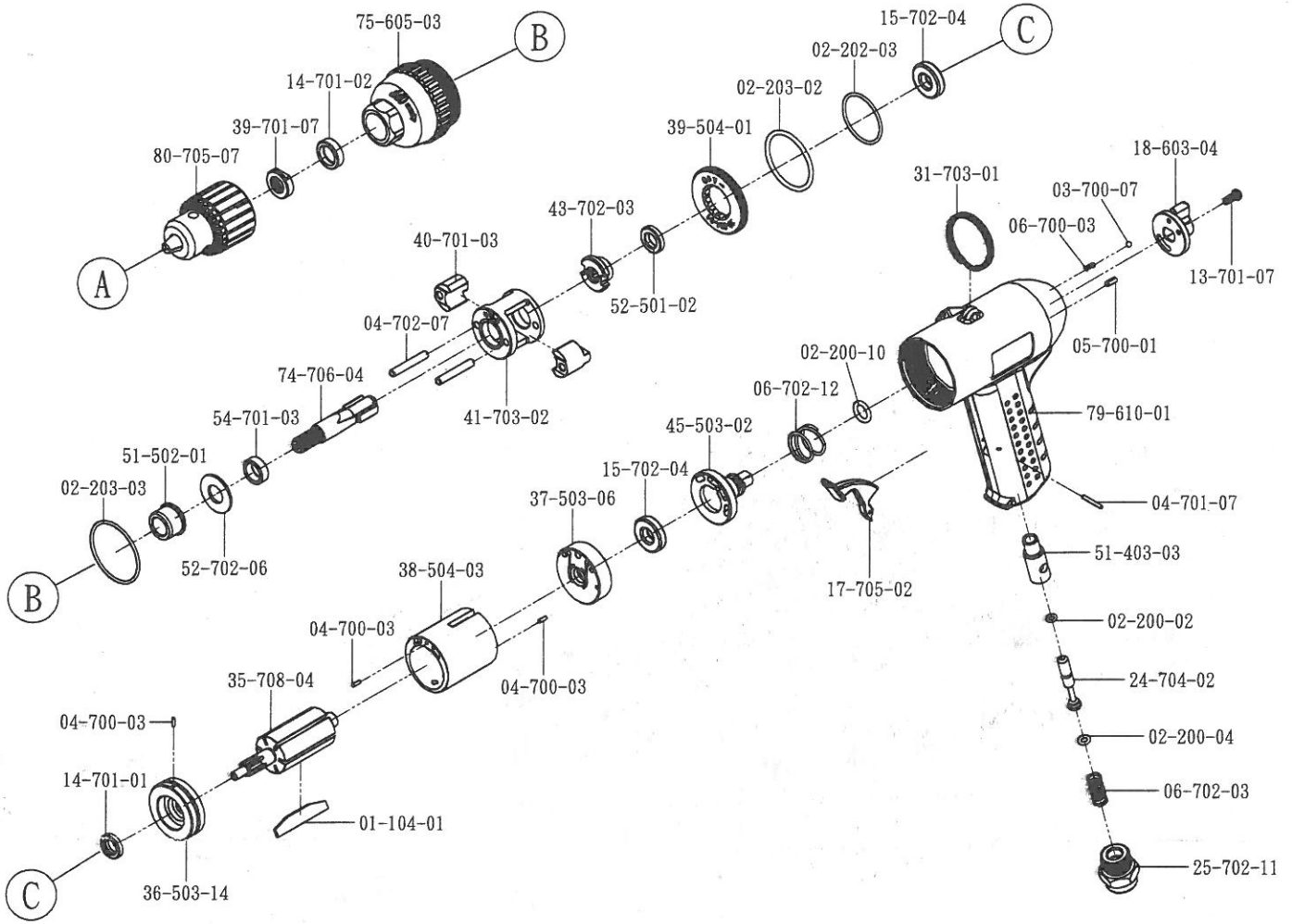


SA6125 Air Impact Hammer Drill



Part NO.	Description	Q' ty	Part NO.	Description	Q' ty	Part NO.	Description	Q' ty
01-104-01	ROTOR BLADE	6	13-701-07	SCREW	1	40-701-03	HAMMER	2
02-200-02	O-RING (S4)	1	14-701-01	OIL SEAL	1	41-703-02	HAMMER CASE	1
02-200-04	O-RING (P4)	1	14-701-02	OIL SEAL	1	43-702-03	HAMMER CAM	1
02-200-10	O-RING (P9. 2x2. 5)	1	15-702-04	BALL BEARING (R6)	2	45-503-02	ADJUSTER	1
02-202-03	O-RING (AS-568-025)	1	17-705-02	SWITCH LEVER	1	51-403-03	BUSHING	1
02-203-02	O-RING (AS-568-126)	1	18-603-04	REVERSE VALVE	1	51-502-01	BUSHING	1
02-203-03	O-RING (AS-568-029)	1	24-704-02	VALVE ROD	1	52-501-02	WASHER	1
03-700-07	STEEL BALL (φ 3. 175mm)	1	25-702-11	AIR INLET (PT)	1	52-702-06	WASHER	1
04-700-03	PIN (φ 2x6)	3	31-703-01	HOOK	1	54-701-03	RING	1
04-701-07	PIN (φ 2x16)	1	35-708-04	ROTOR	1	74-706-04	ANVIL	1
04-702-07	PIN (φ 4. 5x29)	2	36-503-14	FRONT PLATE	1	75-605-03	FRONT CAP	1
05-700-01	PIN (φ 3x8)	1	37-503-06	REAR PLATE	1	79-610-01	HANDLE	1
06-700-03	SPRING	1	38-504-03	CYLINDER	1	80-705-07	CHUCK (10mm)	1
06-702-03	SPRING	1	39-504-01	BOLT	1			
06-702-12	SPRING	1	39-701-07	BOLT	1			

Chuck Size (mm)	Free Speed (rpm)	Max Torque (Nm)	Overall Length (mm)	Weight (kg)	Air Inlet Size	Air Pressure (psi)
10	7000		225	1. 6	1/4"	90

--If you need to order parts, please mark both Parts NO. and Description.-- 2012/9/25