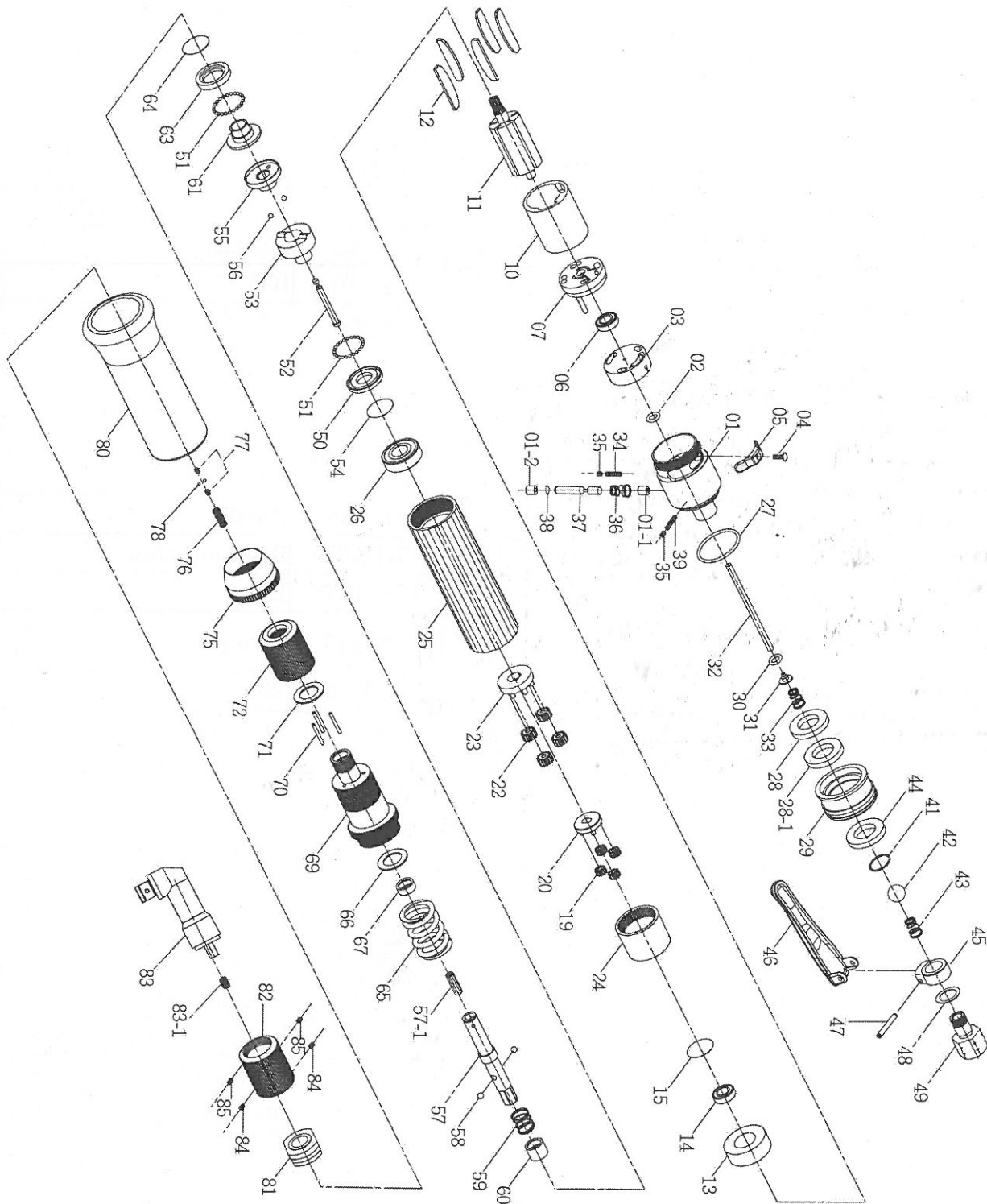


PNEUMATIC SCREWDRIVER MODEL NO.

SA-H45AB

HA1-0800-040



PNEUMATIC SCREWDRIVER MODEL NO.

SA-H45AB

No.	Part No.	Part Name	Q'ty	No.	Part No.	Part Name	Q'ty
1	5A3102	End Housing(Black)	1	44	2P3020	Silencer	1
1-1	2S3010	Inner Bushing	1	45	5A2001	Lever Set	1
1-2	2S3001	Outer Bushing	1	46	5L3102	Lever	1
2	7Q2005	O Ring	1	47	7S2202	Roll pin	1
3	2P3000	Valve	1	48	2Q5001	O Ring	1
4	7S2100	Set Screw And Washer	1	49	2S2010	Air Inlet Bushing [PT]	1
5	2L3010	Switch	1	50	2S2103	Retainer	1
6	7S2016	Ball Bearing	1	51	7S2102	Ball	50
7	1S3001	End Plate	1	52	3S2001	Pilot Pin	1
10	1P3005	Cylinder	1	53	3S2211	Rear Clutch	1
11	1S3041	10T Rotor	1	54	6N2006	C Ring	1
12	1P3050	Blade	5	55	3S2215	Center Clutch	1
13	1P3060	Front Plate	1	56	7S2112	Ball	2
14	7S2002	Ball Bearing	1	57	3S7035	Anvil	1
15	6N2020	C Ring	1	57-1	7Q2002	Regulate Screw	1
19	1P2120	15T Plant Gear	4	58	7S2105	Ball	2
20	1P2283	Fifth Gear Cage and Main Gear	1	59	6N2110	Spring	1
22	1P2121	15T Plant Gear	4	60	3S2226	Slide Base	1
23	1P2286	Fifth Gear Cage	1	61	3S2222	End Clutch	1
24	1S2061	Internal Gear	1	63	3S2231	Ball Race	1
25	5A3009	Center Housing (Black)	1	64	6N3100	C Ring	1
26	7S5003	Ball Bearing	1	65	6N3005	Torque Spring	1
27	7Q2015	O Ring	1	66	2S7121	Washer	1
28	2S2104	Washer	1	67	3S2118	Bushing	1
28-1	2P3010	Silencer	1	69	3S3120	Angle Clutch Housing	1
29	2A3001	Exhaust Deflector	1	70	6S2011	Needle Pin	3
30	7Q2007	O Ring	1	71	3S3101	Regulation Washer	1
31	6S2020	Valve Plate	1	72	3S3002	Torque Ring	1
32	6S2009	Operating Rod	1	75	5A3020	Rear Housing	1
33	6N2101	Cone Spring	1	76	6N3102	Spring	1
34	6S2031	Screw	1	77	7S2111	Screw	2
35	7S2113	Screw	2	78	7S2102	Ball	2
36	6N2133	Spring	1	80	5L3006	Soft Cover [Black]	1
37	2S2503	Valve Pin	1	81	5S2020	Housing Set	1
38	7Q2003	O Ring	1	82	5S2010	Angle Lock Nut	1
39	6S2031-1	Screw	1	83	5C2028	Angle Head Assembly	1
41	7Q6100	O Ring	1	83-1	6N5112	Spring	1
42	7S2109	Ball	1	84	7S2113	Screw	2
43	6N2105	Cone Spring	1	85	7S2113	Screw	2