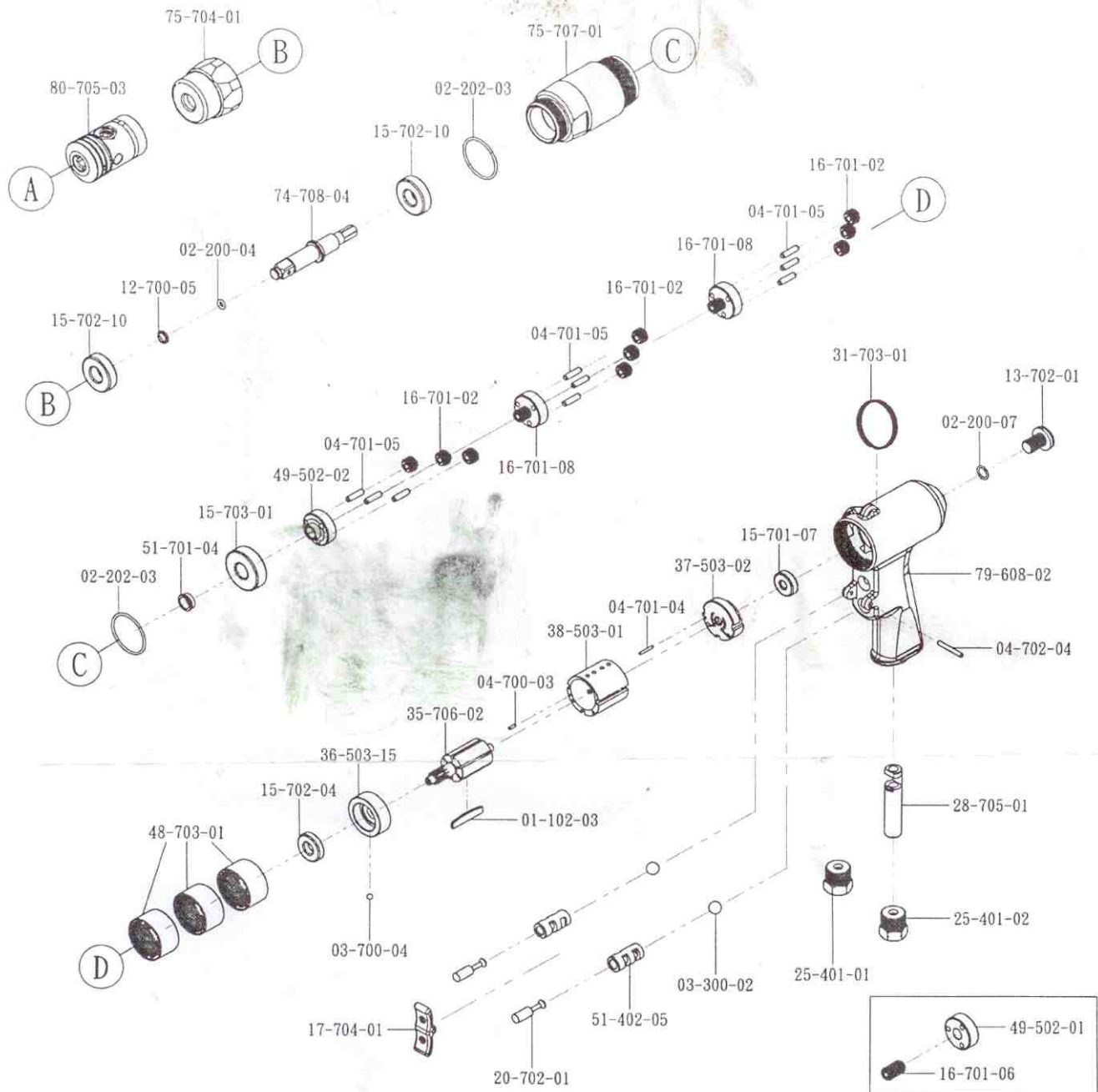


SA8208

Air Tapping-Driver-Wrench(3/8")



Part No.	Description	Q' ty	Part No.	Description	Q' ty	Part No.	Description	Q' ty
01-102-03	ROTOR BLADE	6	15-702-04	BALL BEARING (R6)	1	37-503-02	REAR PLATE	1
02-200-04	O-RING (P4x1.9)	1	15-702-10	BALL BEARING (6001)	2	38-503-01	CYLINDER	1
02-200-07	O-RING (P8x1.5)	1	15-703-01	BALL BEARING (6201)	1	48-703-01	GEAR RING	3
02-202-03	O-RING (P29.87x1.8)	2	16-701-02	GEAR	9	49-502-02	GEAR SEAT	1
03-300-02	PLASTIC BALL(φ9)	2	16-701-08	GEAR	2	51-402-05	BUSHING	2
03-700-04	STEEL BALL (φ4mm)	1	17-704-01	SWITCH LEVER	1	51-701-04	BUSHING	1
04-700-03	PIN (φ2x6)	1	20-702-01	ROD	2	74-708-04	ANVIL	1
04-701-04	PIN (φ2x14)	1	25-401-01	AIR INLET (18)	1	75-704-01	FRONT CAP	1
04-701-05	PIN (φ4x15)	9	25-401-02	AIR INLET (19)	1	75-707-01	FRONT CAP	1
04-702-04	PIN (φ3x24)	1	28-705-01	AIR HOSE	1	79-608-02	HANDLE	1
12-700-05	RETAINING RING	1	31-703-01	HOOK	1	80-705-03	CHUCK	1
13-702-01	SCREW	1	35-706-02	ROTOR	1			
15-701-07	BALL BEARING (626)	1	36-503-15	FRONT PLATE	1			

Capacity (mm)	Free Speed (rpm)	Max Torque (Nm)	Over All Length (mm)	Weight (kg)	Air Inlet Size	Air Pressure (psi)
6-12	150		200	1.3	1/4"	90

--If you need to order parts, please mark both Parts NO. and Description.-- 2006/7/31