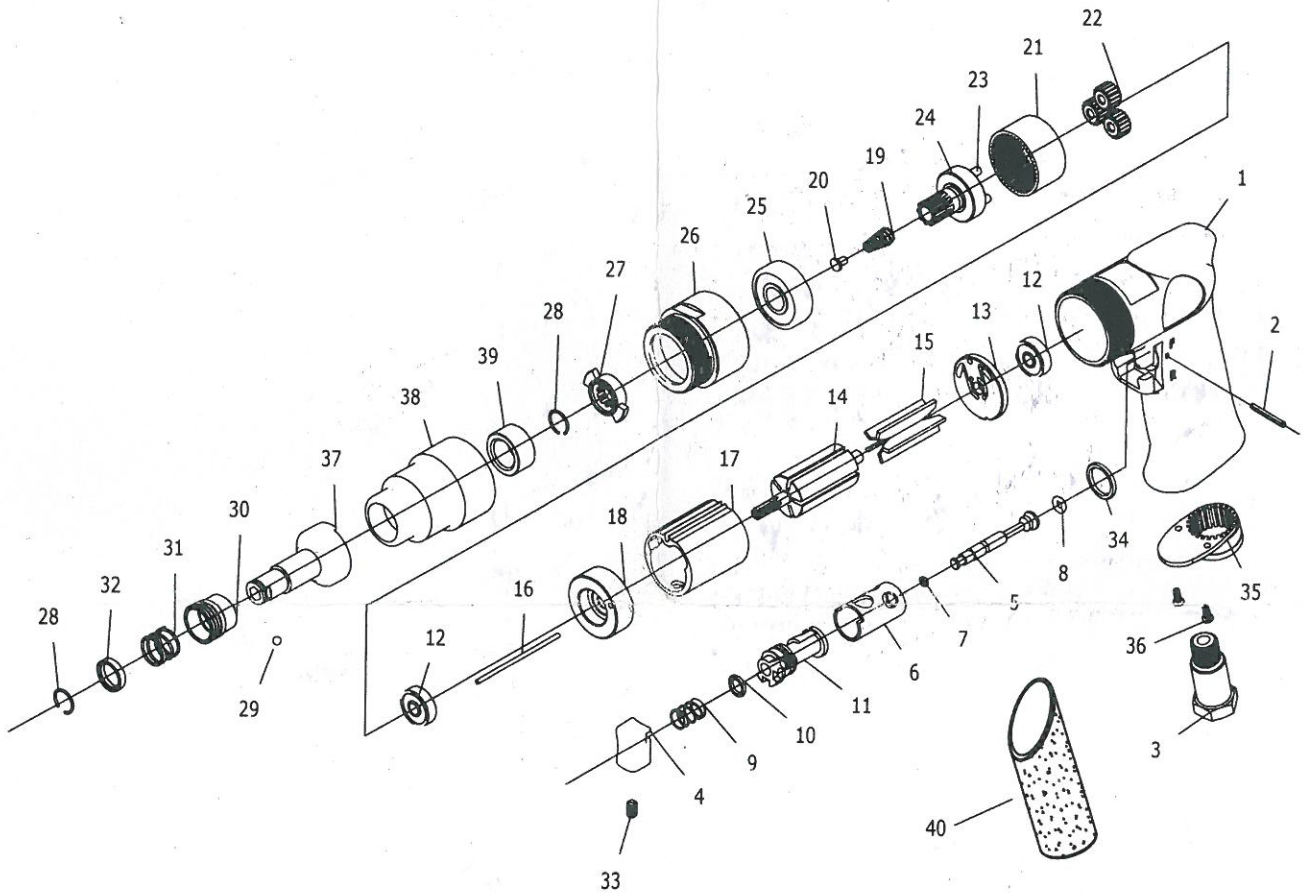


Detalles Técnicos Technical Details	Speed RPM	Chuck mm/inch	Reversible or not	Max. Torque Nm (in-lb)	Length mm/inch	Weight kg/lb	Air Consumption LPM / CFM	Air Inlet inch	Working Pressure Bar / PSI
62300A	2,000	6 (1/4)	✓	13 (115)	189 (7.4)	1.2 (2.6)	76 (2.7)	1/4	6.3 (90)



Index Nr. Index No.	Beschreibung Description	Stück Quantity	Index Nr. Index No.	Beschreibung Description	Stück Quantity	Index Nr. Index No.	Beschreibung Description	Stück Quantity
01	Motor Housing	1	15	Rotor Blade	5	28	Retaing Ring	1
02	Pin (2.5x22)	1	16	Pin (2x55)	1	29	Steel Ball (1/8")	1
03	Air Inlet	1	17	Cylinder	1	30	Realse Sleeve	1
04	Trigger	1	18	Front End Plate	1	31	Spring	1
05	Valve Stem	1	19	Spring	1	32	Washer	1
06	Valve Bushing	1	20	Spindle Guide	1	33	Set Screw(M4x6)	1
07	O-ring (3.5x10.5)	1	21	Internal Gear	1	34	O-ring (P14)	1
08	O-ring (3.9x2.25x2)	1	22	Indle Gear (18T)	3	35	Exhaust Deffuser	1
09	Spring	1	23	Pin	3	36	Screw(M3x8)	2
10	O-ring (8.8x1.9)	1	24	Gear Cage	1	37	Spindle	1
11	Reverse Valve	1	25	Ball Bearing	1	38	Clutch Housing	1
12	Ball Bearing (626zz)	2	26	Gear Housing	1	39	Bushing	1
13	Rear End Plate	1	27	Drive Dog	1	40	Handle Grip	1
14	Rotor	1						