

PARTS TABLE

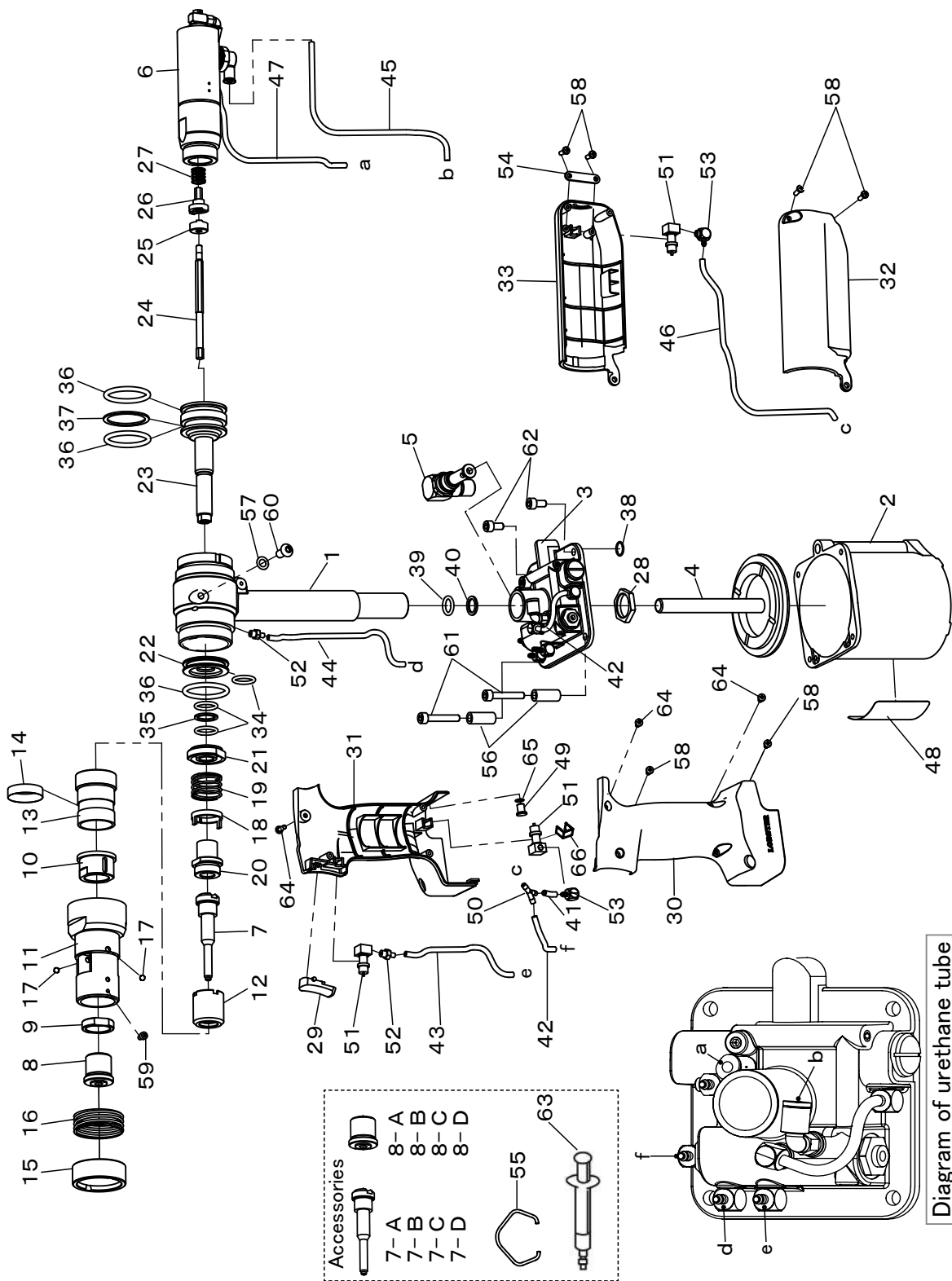


Diagram of urethane tube

Index No.	Part name	Code No.	Material	Index No.	Part name	Code No.	Material
1	Frame	64892	Aluminum	31	Grip cover RH	64930	Plastic
2	Cylinder cup	64921	Aluminum	32	Air motor cover LH	64931	Plastic
3	Cylinder cap unit	64882	①	33	Air motor cover RH	64916	Plastic
4	Air piston unit	64883	②	34	O- ring P-14	10434	Rubber
5	Spool connector unit	64887	②	35	B- ring P-14	10435	Plastic
6	Air motor unit	64886	③	36	O- ring P-30	14445	Rubber
⑦	M6 Screw mandrel	64936	Steel	37	B- ring P-30	64963	Plastic
⑦-A	M4 Screw mandrel	64934	Steel	38	O- ring SS-10	63179	Rubber
⑦-B	M5 Screw mandrel	64935	Steel	39	O- ring P-11	23663	Rubber
⑦-C	M8 Screw mandrel	64937	Steel	40	B- ring P-11	40109	Plastic
⑦-D	M10 Screw mandrel	64938	Steel	41	Urethane tube 25	64951	Plastic
8	M6 Nosepiece	64943	Steel	42	Urethane tube 50	64952	Plastic
8-A	M4 Nosepiece	64941	Steel	43	Urethane tube 110	64953	Plastic
8-B	M5 Nosepiece	64942	Steel	44	Urethane tube 145	64954	Plastic
8-C	M8 Nosepiece	64944	Steel	45	Urethane tube 200	64955	Plastic
8-D	M10 Nosepiece	64945	Steel	46	Urethane tube 215	64956	Plastic
9	Nosepiece lock nut	64947	Steel	47	Urethane tube 245	64909	Plastic
10	Nosepiece base	64904	Steel	48	Warning label	64910	④
11	Frame head	64901	Steel	49	Reverse button	64975	Aluminum
⑫	Mandrel case	64923	Steel	50	Mini fitting coupling (VGY -208)	64920	Plastic
13	Stroke adjusting dial	64902	Steel	51	Valve unit	29350	Brass
14	Adjusting dial seal	64903	④	52	Barb coupling for soft tube	43732	Brass
15	Stroke adjusting lock sleeve	64977	Steel	53	Barb elbow for soft tube	63226	Brass
16	Stroke adjusting lock spring	64978	Steel	54	Valve unit anchor plate	64917	Steel
17	Steel ball φ4	12917	Steel	55	Hanger	15468	Steel
18	Stop ring	64925	Steel	56	Grip collar	64932	Aluminum
19	Stop spring	64928	Steel	57	Sealing washer	63209	Rubber
20	Lock sleeve	64924	Steel	58	Tapping screw for synthetic resin M3X8	64969	Steel
21	Lock nut	64927	Steel	59	Hex socket bolt M3 X 5	43736	Steel
22	Return piston	64922	Aluminum	60	Bleed plug	63213	Steel
23	Oil piston	64900	Steel	61	Hex socket bolt M5 X 30	64971	Steel
24	Conveyor rod	64926	Steel	62	Hex socket bolt M5 X 10	64409	Steel
25	Clutch A	64948	Steel	63	Priming pump	29624	Plastic
26	Clutch B	64949	Steel	64	Cross recessed pan head screw M3 X 8	20860	Steel
27	Clutch spring	64950	Steel	65	O- ring SS-5	64919	Rubber
28	Frame mounting nut	63228	Steel	66	Plain label for reverse valve	64972	Paper
29	Switch	29348	Plastic				
30	Grip cover LH	64929	Plastic				

Parts with circled Index NO. are consumable parts. They should be replaced periodically.

Sold separately

Unit parts materials

- ① Aluminum, Rubber
- ② Aluminum, Rubber, Steel
- ③ Aluminum, Rubber, Steel, Plastic
- ④ Paper, Plastic

Part name	Code No.
M3 Screw mandrel	64933
M12 Screw mandrel	64939
M3 Nosepiece	64940
M12 Nosepiece	64946
Hydraulic oil in a bottle	10012
Lubricant oil JO-50	889