



USER MANUAL

ANGLE GRINDERS

MODELS : FA-5E-13V, -13VF



FA-5E-13V

FA-5E-13VF

SPECIFICATIONS

Model	Max. Dia (Grinding Wheel)		Rotational Frequency	Spindle Thread Size	Angle Head Height		Overall Length		Mass		Max. Air Consumption		Air Inlet Thread Size
	mm	in			mm	in	mm	in	kg	lb	m ³ /min	ft ³ /min	
FA-5E-13V	125×6×22.2	5×1/4×7/8	12,000	3/8-24UNF(M)	75	2 61/64	225	8 55/64	2.2	4.8	0.95	33.5	PT or NPT 3/8
FA-5E-13VF	125×6×22.2	5×1/4×7/8	12,000	3/8-24UNF(M)	75	2 61/64	262	10 5/16	2.2	4.8	0.95	33.5	PT or NPT 3/8

Air Hose Size: 9.5mm (3/8")

The performance figures are at 0.63MPa (6.3bar).

⚠ Refer to "The Instructions and Warning for Safety Use" enclosed in each tool box.

FUJI AIR TOOLS CO., LTD.

2-1-14 Kamiji, Higashinariku, Osaka 537-0003, Japan

Tel : (06) 6972-2335

Fax : (06) 6972-2250

BOLT & NUT SETTERS
SCREW DRIVERS

ABRASIVE TOOLS

DRILLS • TAPPERS

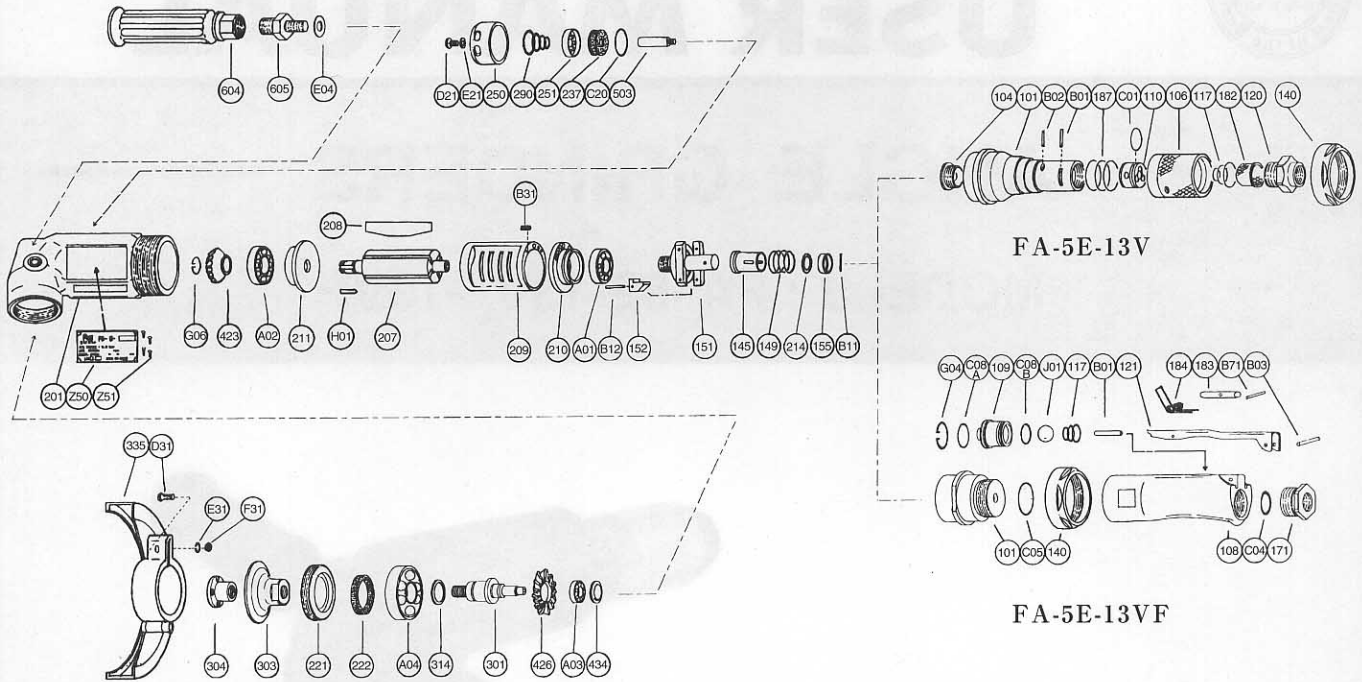
PERCUSSION TOOLS

AIR MOTORS & OTHERS

OTHER PRODUCTS

PARTS LIST MODEL: FA-5E-13V, -13VF

EXPLODED VIEW



PARTS LIST

Index No.	Parts No.	Parts Name	Qt.	Index No.	Parts No.	Parts Name	Qt.	Index No.	Parts No.	Parts Name	Qt.
FA-5E-13V				C08A	O-S16	"O" Ring	1	250	A-192250-01	Exhaust Cover	1
FA-5E-13VF				C08B	O-S14	"O" Ring	1	251	A-192251-00	Exhaust Valve	1
Ass'y No.	A-154001-00	Housing Cover Ass'y (PT)		G04	SR-R20	Snap Ring	1	290	A-192290-00	Muffler Spring	1
Ass'y No.	A-154001-02	Housing Cover Ass'y (NPT)		J01	B-9/16U	Urethane Ball	1	301	A-192301-01	Wheel Spindle	1
101	A-154101-00	Housing Cover	1	Ass'y No.	A-192019-00	Lock Lever Ass'y		303	A-192303-01	Wheel Flange (A)	1
104	A-065104-02	Bushing	1	121	A-192121-00	Throttle Valve Lever	1	304	A-192304-02	Wheel Flange (B)	1
106	A-086106-00	Throttle Valve Handle	1	183	G-144183-02	Lock Key	1	314	A-006314-00	Wheel Spindle Washer (T=0.2) or	1
110	A-086110-00	Throttle Valve	1	184	G-144184-00	Lock Spring	1		A-006314-01	Wheel Spindle Washer (T=0.3) or	1
117	A-086117-00	Throttle Valve Spring	1	B71	SP-218	Spring Pin	1		A-006314-02	Wheel Spindle Washer (T=0.5)	1
120	A-086120-00	Throttle Valve Cover (PT)	1	FA-5E-13V				335	A-192335-00	Wheel Guard	1
120	A-086120-01	Throttle Valve Cover (NPT)	1	FA-5E-13VF				(D31)	HS-625	Hexagon Bolt	1
182	A-086182-00	Strainer	1	Ass'y No.	A-107010-00	Governor Weight Ass'y		(E31)	SW-6	Spring Washer	1
187	A-086187-00	Throttle Valve Handle Spring	1	151	A-107151-01	Governor Cage	1	(F31)	N-6	Nut	1
B01	NR-415	Needle Roller	1	152	A-010152-00	Governor Weight	2	423	A-192423-00	Bevel Pinion	1
B02	NR-413	Needle Roller	1	B12	GP-2.516GCH	Grooved Pin	2	426	A-192426-00	Bevel Gear	1
C01	O-S20	"O" Ring	1	140	A-154140-00	Cup Nut (for FA-5E-13V)	1	434	A-099434-00	Bearing Washer	1
FA-5E-13VF				145	A-065145-00	Governor Valve	1	503	A-192503-00	Spacer (B)	1
Ass'y No.	A-192001-02	Housing Cover Ass'y		149	A-093149-03	Governor Valve Spring	1	604	A-025604-02	Dead Handle	1
101	A-192101-01	Housing Cover	1	155	A-065155-00	Governor Valve Spring Holder	1	605	A-107605-00	Dead Handle Joint	1
140	A-154140-00	Cup Nut	1	201	A-192201-00	Housing	1	A01	BB-609MN	Ball Bearing	1
C05	O-S29	"O" Ring	1	207	A-192207-00	Rotor	1	A02	BB-6000MN	Ball Bearing	1
Ass'y No.	A-192003-01	Throttle Valve Body Ass'y (PT)		208	A-152208-00	Rotor Blade	4	A03	BB-606	Ball Bearing	1
Ass'y No.	A-192003-03	Throttle Valve Body Ass'y (NPT)		209	A-152209-00	Cylinder	1	A04	BB-6003ZZ	Ball Bearing	1
108	A-192108-01	Throttle Valve Body	1	(B31)	SP-2.56	Spring Pin	1	B11	NR-211.8	Needle Roller	1
109	A-192109-00	Throttle Valve Bushing	1	210	A-192210-00	Cylinder Upper Plate	1	C20	O-S30	"O" Ring	1
117	A-192117-00	Throttle Valve Spring	1	211	A-152211-01	Cylinder Lower Plate	1	D21	CS-58B	Cap Screw	1
171	A-192171-00	Inlet Joint (PT)	1	214	A-065214-00	Adjusting Washer (T=0.2) or	1	E04	PW-8	Plain Washer	1
171	A-192171-01	Inlet Joint (NPT)	1		A-065214-01	Adjusting Washer (T=0.3) or	1	E21	PW-5	Plain Washer	1
B01	NR-423FR	Needle Roller	1		A-065214-02	Adjusting Washer (T=0.5)	1	G06	SR-G9	Snap Ring	1
B03	SP-320	Spring Pin	1	221	A-192221-00	Spindle Bearing Cover	1	H01	K-338F	Key	1
C04	O-P20	"O" Ring	1	222	A-006222-00	Felt Ring	1	Z50	NP-0119	Name Plate	1
				237	A-192237-00	Muffler Pad	2	Z51	NPN-0x3.2	Screw Rivet	4

□ Ass'y No. denotes no. of the assembled parts comprising of more than 1 pc. of parts.

The related parts are shown in the thick frame.

□ Index Nos. 209 and 335 are supplied together with parts shown in ().

□ Specify parts number and quantity in ordering.

■ Standard Accessories : F-203 32mm Open-End Pin Wrench 1.

F-110 26mm Open-End Wrench 1.