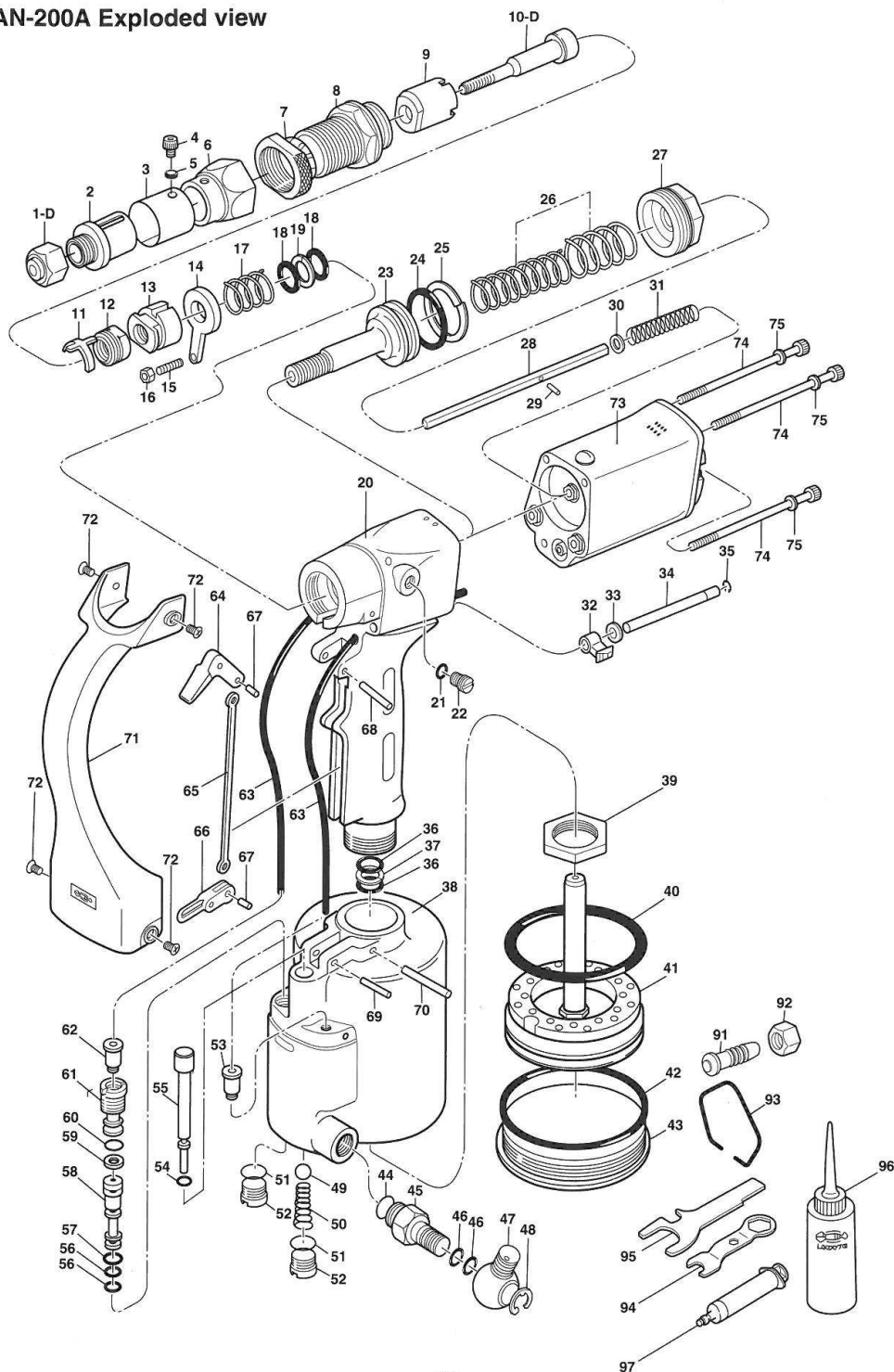


AN-200A Exploded view



AN-200A Parts table

Index No.	Code	Parts name	Index No.	Code	Parts name
1-D*	15618	Nosepiece M6	44	10151	O-ring S-10
2	12898	Nose	45	42479	Double male connector
3	12899	Safety cover	46	10149	O-ring P-7
4	12901	Hex indent screw M4	47	42501	Rotary joint
5	15667	Spring washer M4B	48	10285	Retaining ring E-7
6	17112	Connector	49	14239	Urethane ball
7	17108	Stroke set nut	50	14255	Valve spring
8	17104	Front flange	51	14475	O-ring S-8
9	15692	Mandrel case	52	14294	End plug
10-D*	15635	Screw mandrel M6	53	14848	One touch joint
11	17100	Stop ring	54	10454	O-ring P-4
12	17096	Adaptor	55	14172	Valve pusher
13	17092	Adaptor lock nut	56	12120	O-ring P-5
14	15955	Guide	57	10149	O-ring P-7
15	15680	Guide screw	58	14513	Spool
16	15732	Guide screw nut	59	14818	Packing
17	15841	Guide spring	60	10149	O-ring P-7
18	10128	O-ring P-12	61	14767	Pilot holder
19	10129	B-ring P-12	62	14848	One touch joint
20	15837	Frame unit (with 18, 19, 36, 37)	63	15611	Urethane tube
21	12120	O-ring P-5	64	14375	Trigger
22	12135	Bleed plug	65	10202	Trigger connector rod
23	17077	Oil piston	66	10282	Trigger lever
24	12437	O-ring P-26	67	10147	Spring pin 3 × 6
25	12438	B-ring P-26	68	10251	Spring pin 3 × 20
26	16623	Return spring set	69	10145	Spring pin 3 × 18
27	17088	Frame cap	70	14154	Slotted pin 4 × 31
28	15817	Conveyor rod	71	29151	Grip cover
29	16101	Spring pin ø1.2	72	15645	C-screw M3
30	14642	Flat washer M5	73	29150	Air motor assembly
31	10133	Jaw pusher spring	74	15435	Hex indent screw M4 × 90
32	15744	Reverse switch lever	75	15667	Spring washer M4B
33	14642	Flat washer M5	91	10140	Air hose joint 1/4
34	15768	Guide pin	92	10139	Air hose joint nut 1/4
35	15800	Retaining ring E-3.2	93	15468	Hanger
36	10337	O-ring P-10A	94	10141	Spanner A
37	16030	B-ring P-10A	95	14036	Spanner B
38	15869	Air cylinder	96	10012	Hydraulic oil in a bottle
39	10112	Frame lock nut	97	14142	Priming pump
40	10134	O-ring P-60			
41	14798	Air piston unit (U)	OPTION	889	Jaw-Lube in a bottle
42	10080	O-ring G-70	OPTION	28054	Nosepiece spacer 4mm
43	15276	Air cylinder cap			

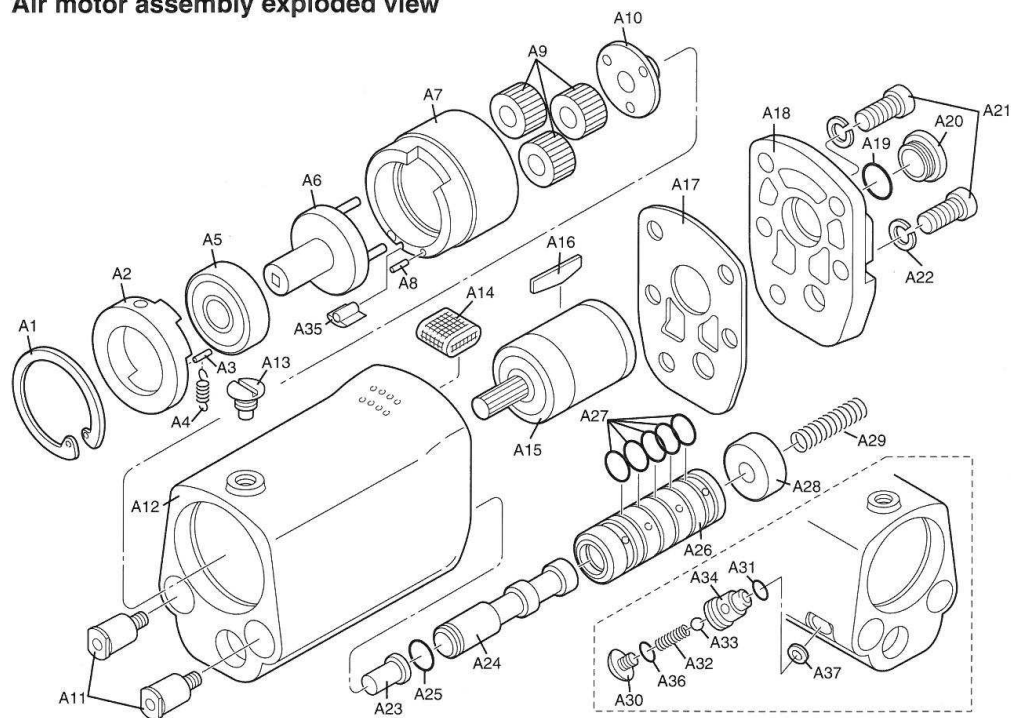
* For other thread sizes, please refer to the page 19, "Pulling Head Combination".

■ **ORDERING PARTS** ■ Indicate the tool model, part code number, part name and quantity as shown below when ordering.

(Example)	Model	Part Code No.	Part Name	Qty.
	AN-200A	15617	Screw Mandrel M5	2

When parts are modified for improvement, the older parts are kept in stock for a period of five years.

Air motor assembly exploded view



* The Truss Head Screw (A30) is pre-adjusted to give optimal tool performance. Do not turn otherwise the tool will not work properly.

Air motor assembly parts table

Index No.	Code No.	Parts Name	Index No.	Code No.	Parts Name
A 1	17068	Snap Ring #34	A20	16665	Motor Cap
A 2	28468	Adaptor Cap	A21	16863	Hex Indent Head Bolt (4×10)
A 3	11932	Spring Pin 2×8	A22	15667	Spring Washer M4 (black)
A 4	28483	Clutch Returning Spring	A23	16867	Changer Pin
A 5	16452	Bearing 629ZZ	A24	16871	Spool (2)
A 6	16136	Gear Frame (2)	A25	10149	O-Ring P-7
A 7	28469	Internal Gear	A26	16875	Attachment
A 8	14438	Spring Pin ϕ 2×10	A27	10219	O-Ring P-9
A 9	16733	Planetary Gear	A28	28474	Spool Stopper
A10	16829	Gear Frame (1)	A29	16826	Spool Returning Spring
A11	14848	One Touch Joint	A30	28475	Truss Head Screw
A12	44952	Motor Casing	A31	10220	O-Ring S-6
A13	29060	Setting Screw	A32	28481	Plunger Spring
A14	16847	Muffler	A33	28484	Urethane Ball 5/32
A15	16851	Motor Set (Including 5 Vanes)	A34	43580	Plunger Case
A16	14015	Vane (Inner Parts)	A35	43581	Cam
A17	16855	Seal Packing	A36	14475	O-Ring S-8
A18	44953	Cap	A37	44954	Thin plate
A19	10219	O-Ring P-9			

WARRANTY & SERVICE

LOBSTER® WARRANTS THAT GOODS COVERED BY THIS MANUAL WILL CONFORM TO APPLICABLE SPECIFICATIONS AND DRAWINGS AND THAT SUCH GOODS WILL BE MANUFACTURED AND INSPECTED ACCORDING TO GENERALLY ACCEPTED PRACTICES OF COMPANIES MANUFACTURING INDUSTRIAL TOOLS. THERE ARE NO WARRANTIES WHICH EXTEND BEYOND THE FOREGOING.

THE LIABILITY OF LOBSTER® ON PARTS FOUND TO BE DEFECTIVE IS LIMITED TO RE-WORK OR THE REPLACEMENT OF SUCH GOODS AND IN NO CASE TO EXCEED THE INVOICE VALUE OF THE SAID GOODS. UNDER NO CIRCUMSTANCES WILL LOBSTER® BE LIABLE FOR DAMAGES OR COSTS INCURRED BY THE BUYER OR SUBSEQUENT USER IN REPAIRING OR REPLACING DEFECTIVE GOODS.

ROUTINE MAINTENANCE AND REPAIR OF LOBSTER® RIVET TOOLS CAN BE PERFORMED BY AN AVERAGE MECHANIC.

HOWEVER, IF YOU HAVE A LOBSTER® RIVET TOOL THAT IS IN NEED OF MAJOR REPAIR WE RECOMMEND THAT IT BE SENT DIRECTLY TO US POSTAGE PAID FOR SERVICE AT A REASONABLE CHARGES.

MANUFACTURER

LOBTEX CO.,LTD.

OSAKA, JAPAN

TECHNICAL DATA

SPECIFICATIONS

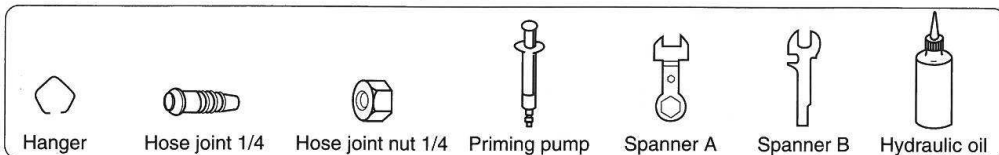
Model No.	AN-200A
Weight	2.6 kg
Height	290 mm
Total length	262 mm
Operating air pressure	0.59 ~ 0.69 MPa (6 ~ 7 kgf/cm ² , 85 ~ 100 psi)
Work Capacity:	ANY STANDARD THIN WALL RIVET NUT FROM M3 - M10 (#6, #8, #10, 1/4, 5/16, 3/8) IN ALL MATERIALS AND ANY FLANGED HEAD RIVET NUT IN ALL MATERIALS FROM M3 - M8 (#6, #8, #10, 1/4, 5/16) (M10 or 3/8 in aluminum)
Air consumption per rivet nut	5 l /nut
Operating environment	Temperature 4° to 35 °C Relative humidity 80%RH max. (no condensation)
Sound	Pressure level (Lpa) 74 dB
Vibration	Emission value 0.0024 m/sec ²
Air intake	Size of screw G1/4 (PF1/4)

* Product specifications and design are subject to change for improvement without notice.

* Weight and dimensions given are standard values. Actual products may differ slightly from the values given.

ACCESSORIES

Check at the time of purchase.



* Accessories differ slightly from those given above between tools delivered in Japan and overseas.

Manufacturing year of unit	➡ Indicated on the bottom of Air Cylinder in cipher
Installation site of rated plate	➡ Along the side of Air Cylinder
Installation site of caution plate	➡ Along the side of Air Cylinder

* Rated plate and caution plate is identical.

PREPARATION BEFORE USE

- Set up the compressor, and be sure to install an air filter, air regulator and lubricator between the compressor and the air nutter.

ATTENTION!

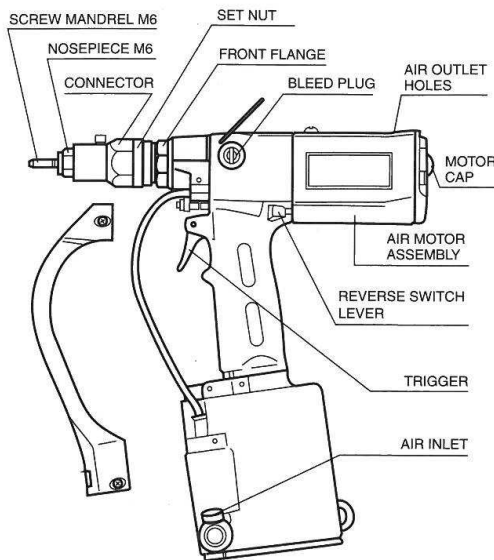
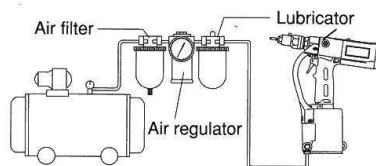
If these are not installed, water or other particles in the air may prevent the tool from operating smoothly.

- Use the air regulator to adjust the operating air pressure to 0.59 ~ 0.69 MPa (6 ~ 7 kgf/cm², 85 ~ 100 psi).

ATTENTION!

If the air pressure is too high, damage to parts may occur. If the pressure is too low, the rivet nut may not be sufficiently pulled up.

- Replace the attachments (screw mandrel and nosepiece) to conform to the size of the rivet nut being used. The tool is fitted with M6 attachments at the time of purchase.



PULLING HEAD COMBINATION

It is important to have a correct Screw Mandrel and Nosepiece combination. If incorrect or if you need to change thread size, refer to the listing on the Screw Mandrel and Nosepiece combination, as follows:

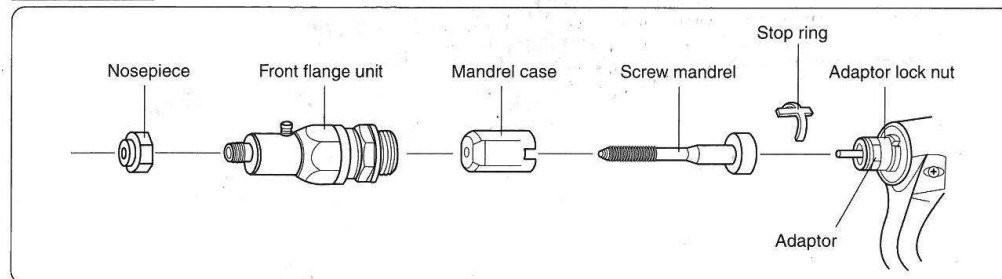
SCREW MANDREL AND NOSEPIECE COMBINATION					
Thread Size	(Pull-up Stud) Screw Mandrel		(Anvil) Nosepiece		**Thread Conversion Kit
	Index	Code	Index	Code	Index Code
Metric Threads					
M3 × 0.5 – 6H	010A	15460	001A	15445	100A 16830
M4 × 0.7 – 6H	010B	15476	001B	15464	100B 16834
M5 × 0.8 – 6H	010C	15617	001C	15480	100C 14700
*M6 × 1.0 – 6H	010D	15635	001D	15618	100D 16328
M8 × 1.25 – 6H	010E	15656	001E	15640	100E 16537
M10 × 1.5 – 6H	010F	15676	001F	15661	100F 16542
Unified Threads					
#6 – 32 UNC – 2B	010G	16868	001G	16837	100G 16861
#8 – 32 UNC – 2B	010H	16864	001H	16841	100H 14299
#10 – 24 UNC – 2B	010J	16872	001J	16845	100J 14419
#1/4 – 20 UNC – 2B	010K	14327	001K	16849	100K 16152
#5/16 – 18 UNC – 2B	010M	15787	001M	16853	100M 16737
#3/8 – 16 UNC – 2B	010N	16588	001N	16857	100N 16840
#10 – 32 UNF – 2B	010R	14040	001J	16845	100R 15442
#1/4 – 28 UNF – 2B	010S	14600	001K	16849	100S 16329
#5/16 – 24 UNF – 2B	010T	16167	001M	16853	100T 16833
#3/8 – 24 UNF – 2B	010U	16821	001N	16857	100U 16844

* The tool is initially supplied with M6 thread attachment fitted.

** Thread Conversion Kit includes a set of Screw Mandrel & Nosepiece.

CHANGING THREAD SIZE

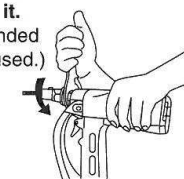
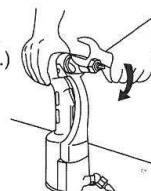
CAUTION Make sure that the air supply is disconnected before replacing any of the attached parts.



DISASSEMBLY

- Use spanner B to turn the nosepiece clockwise in order to loosen it. (A left-handed thread is used.)
- Use spanner B to turn the front flange unit clockwise in order to loosen it. (A left-handed thread is used.)
- Use a narrow pin or similar device to lift up the stop ring in order to disengage it.

* The nosepiece moves freely back and forth.



* It will be easier to carry out later reassembly if the stop ring is not fully removed.

